

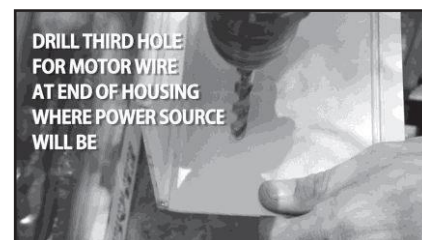
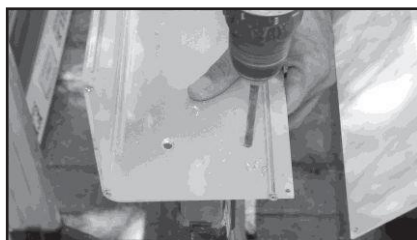
Baby Grande with Somfy Motor, Housing and Side Rails Installation Instructions

| Tools Needed | Hardware Provided (per shade) | Hardware Needed |
|--|---|--|
| Drill 3/8" Metal Drill Bit 1/4" Masonry Drill Bit Measuring Tape Pencil 4" Level Phillips #2 Driver Manual Screwdriver (Phillips) Power Miter Saw 1/2" Metal Drill Bit 1/8" Metal Drill Bit | End Caps (Brackets) (2) Housing (1) Shade Fabric Tube (1) Side Rails (2) Deco Caps (6 -8) Remote (1) Motor Clip (1) L Channel brackets (if inside mounting) (2) | 5/16" X 4 1/2" Lag Screws or Appropriate (4 or more) 3/8" Flat Washers or Appropriate (4 per shade) 2 1/2" Drywall Screws (6 -8) Sheet Metal Screws (6—8) if mounting rails to L Channel Brackets |

[*Instruction Pictures Go From Left to Right]

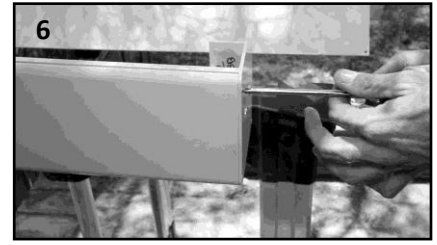
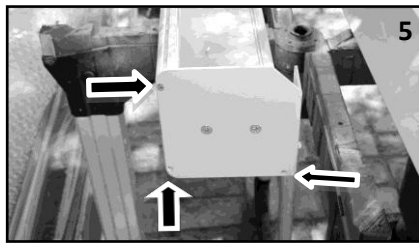
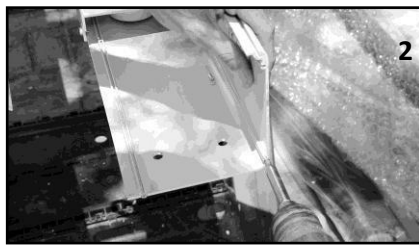
1. Prepare Back of Housing

Before starting, ensure that neither part of the housing is bent and that they fit together by assembling just the front and back on the floor.



FOR BABY GRANDE: Starting at one at end of housing, make two mounting hole marks 1 1/4" in from end cap on your housing. This is so that the bolt heads will not be behind the fabric roll so they cannot contact the fabric and damage it. You will need to 'toe nail' the bolts (insert at an angle.)

Using a 3/8" metal drill bit, drill the two mounting holes. Repeat this process on other side of housing with other end cap. Drill a third hole for motor wire at end of housing where power source will be, within 1 1/4" from end cap. It is best to run motor wire through side or bottom of housing, be sure wire will not interfere. If drilling top, wire hole **MUST** be sealed to prevent water damage to motor. **[Note: Top mount holes are on top of the housing, surface mount holes are on back of the housing. Pictures above demonstrate surface mount holes.]**

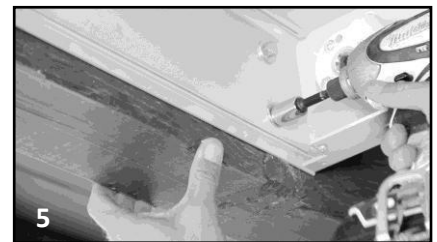


[STEPS 1-3] Start at one end of housing and remove 3 screws attached to housing and set aside. Repeat same process on other side of housing.

[STEPS 4-6] Align motor end bracket up to screw holes (holes you just removed screws from) and secure using 3 screws you set aside with Phillips screwdriver (Arrows pointing to holes in bracket). Repeat same process on opposite side with bearing end bracket.

BEFORE attempting to install on mounting surface: Put front and back housing together on the floor to make sure that the parts fit together. If the leading edges are malformed, or if either housing piece is bent, they will not assemble correctly. Contact us for help. This is usually caused by shipping damage. If they go together correctly proceed with the installation. If difficulty is experienced putting the front on once the back is mounted, this usually means the mounting surface is not flat and bolting it down has pulled the housing temporarily out of shape, and you will need to loosen the bolts and use spacers so that the back housing is flat.

2. Hang Back of Housing and Side Rails – 2 Person Job



FOR INSIDE MOUNT: You need to install the L Channel brackets before the housing as they go the full height of the opening and behind the housing. Cut the “L” Channel Brackets to required length. For most installations these should go from the floor to the top of the opening, continuing along the sides of the shade housing on either side. Next, install them. The back (2 ½” leg) of the brackets should be lined up with the back of the housing with the 1” leg flush against the inside of the opening. Make sure the bracket is mounted level to the inside of the opening, going from top to bottom. It is recommended that you pre-drill the bracket prior to final installation to the inside of the opening (do not predrill for the side track attachment at this time). Put in the top mounting fastener, then level the channel and put in the bottom fastener to maintain the level. Complete this installation by securing bracket with additional fasteners, top to bottom, ensuring the bracket remains level.



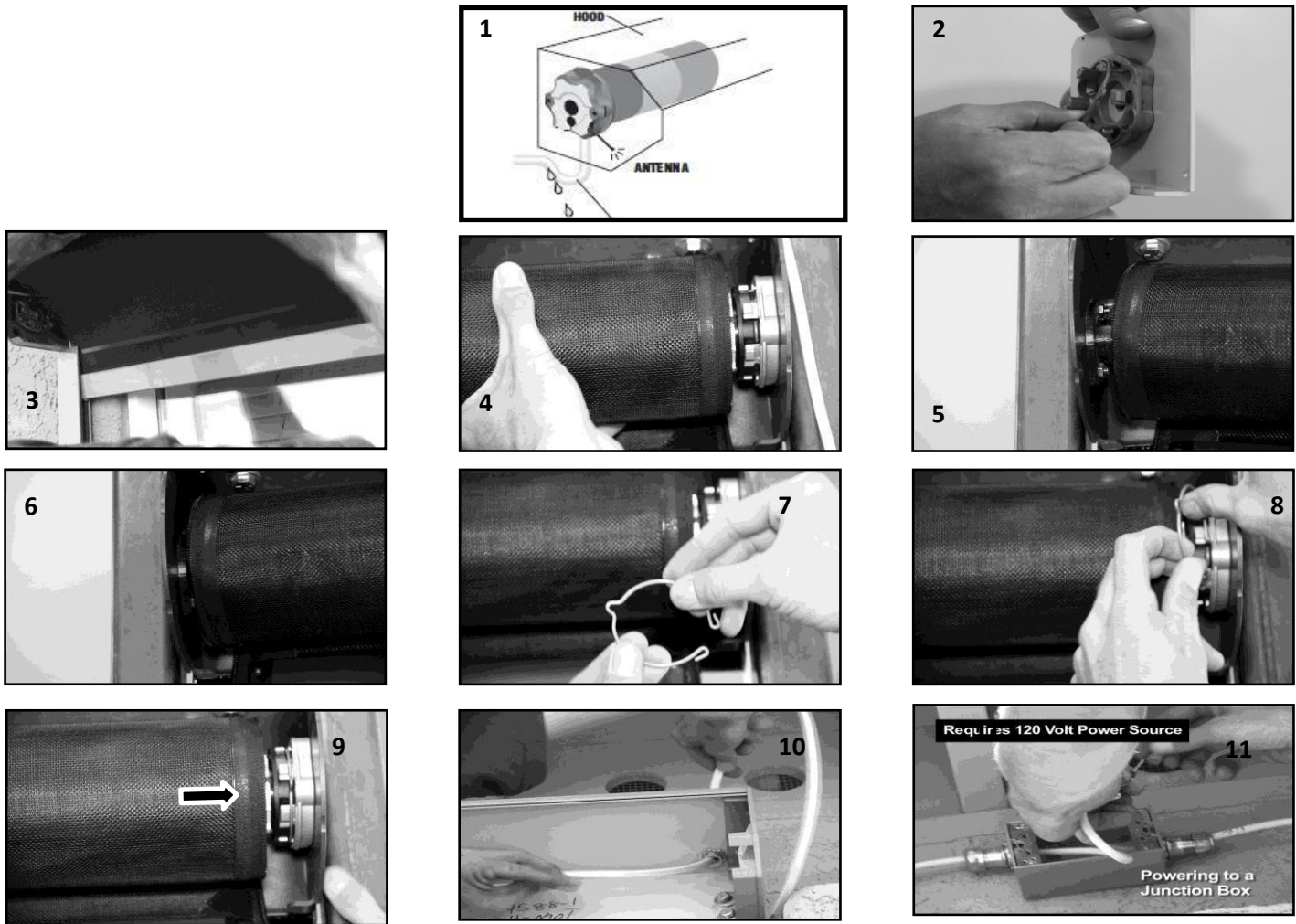
Remove hood screws on both sides of housing located underneath brackets. Set aside.



FOR OUTSIDE MOUNT, starting on one side, place side rail on flat surface directly underneath housing, making sure it is flush (#1). Mark on side rail front where you want to put your mounting screws. Use 1/2" drill bit to drill through the front of the side rail, and 1/8" drill bit to drill through the back of the side rail and mounting surface. Secure top hole with a screw. Making sure rail is level, secure remaining screws. Repeat process for other side.
FOR INSIDE MOUNT starting on one side, place side rail on the 2 1/2" leg of the L Channel bracket. Secure with sheet metal screws through the back of the L Channel bracket.

Secure the top hole using an appropriate screw for your mounting surface (#2). Making sure the side rail is level, secure the remaining screws (#3, #4). Repeat this process on the other side (#5).

3. Hang Tube With Fabric - 2 Person Job



PLEASE NOTE: In order to avoid water penetration, form a "drip loop" with the power cable and use hood when required (#1). Remove motor clip from star bracket and set aside (#2). Remove bolt from cradle idler and place white bearing on round pin. Make sure motor wire is placed in side channel (under yellow cap). Before installing tube, first insert bottom slats of shade into side rails on both sides (#3). Slide motor end of shade into star bracket (#4). Slip round pin into idler and replace bolt in idler (#5-6). Reinstall motor clip onto bracket, making sure mouth snaps in place over bracket and motor head (#7-9). Feed motor wire through third hole in housing (#10). Tie motor wire into electrical source, such as junction box (#11).

4. Test Shade



Run shade up and down a few times by pressing the up and down arrows on the provided remote to be sure there are no side rail adjustments needed.

5. Install Deco-Caps

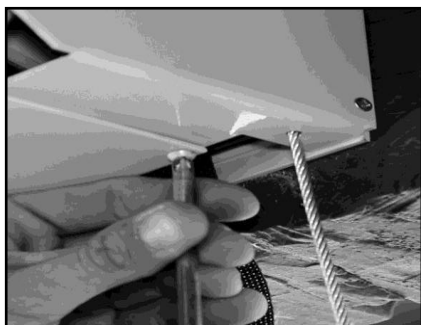


NOTE: Skip to step #6 if side rails are a side mount. Snap caps provided into mounting holes on side rails.

6. Install Front/Bottom Housing



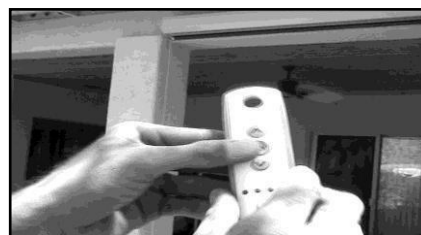
Set housing into groove at top and bring down to set into place.



Install the two hood screws you put aside earlier onto bottom of front housing to secure, one on each side.



7. Adjust Somfy Motor Limits



[NOTE: Motors come pre-programmed with short limits.] To change the lower limit, send the motor to its current lower limit by pressing the down arrow. Press both the up and down button at the same time until the motor jogs. Adjust to your desired lower limit position and press the “my” button until the motor jogs. This saves your lower limit. To change the upper limit, send the motor to its current upper limit. Press both the up and down buttons at the same time until the motor jogs. Adjust to your desired upper limit position and press the “my” button until the motor jogs. This saves your upper limit.

You're done! Enjoy!