

Baby Grande or Grande Motorized (XQ5 Premium) Shade with Cables and Housing Installation Instructions

Tools Needed	Hardware Provided (per shade)	Hardware Needed
Drill 3/8" Metal Drill Bit Measuring Tape Pencil 4" Level Plumb Line 1/4" Masonry Drill Bit Hammer Linesmans Pliers Cable Cutters 1/2" Metal Drill Bit	End Caps (Brackets) (2) Housing (1) Shade Fabric Tube (1) Cable with Tension Rod, Washers & Nuts (2) Cable Anchors (2) Eye bolts (2) Simplex Cable Fasteners (2) Remote (1) per order Motor Clip(1)	5/16" X 4 1/2" Lag Screws or Appropriate (4 or more) 3/8" Flat Washers or Appropriate (4 per shade)

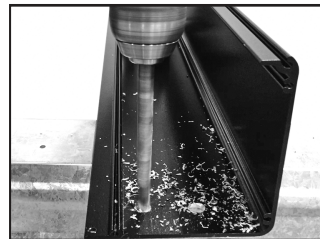
[*These instructions represent a surface mount installation. Pictures Go From Left to Right]

Before you begin

Before starting, ensure that neither part of the housing is bent and that they fit together by assembling just the front and back on the floor.

1. Prepare Back of Housing

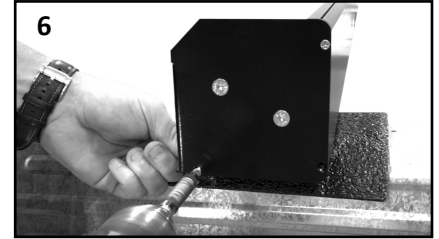
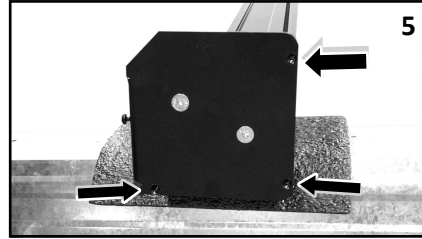
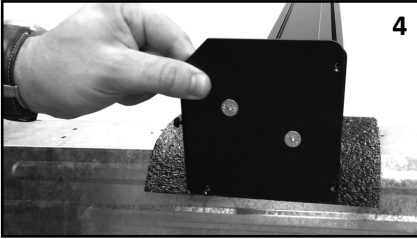
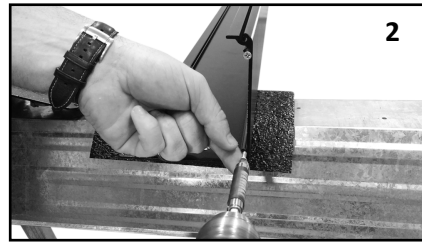
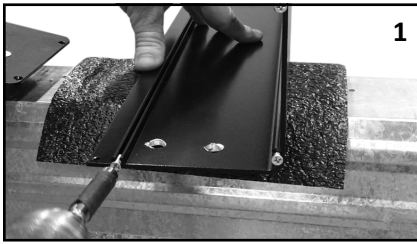
Drill third hole for motor wire at end of housing where power source will be.



FOR BABY GRANDE: Starting at one at end of housing, make two mounting hole marks 1 1/4" in from end cap on your housing. This is so that the bolt heads will not be behind the fabric roll so they cannot contact the fabric and damage it. You will need to 'toe nail' the bolts (insert at an angle.)

FOR GRANDE: Starting at one end of the housing, make two mounting hole marks 2" in from the end cap on your housing.

Using a 3/8" metal drill bit, drill the two mounting holes. Repeat this process on other side of housing with other end cap. Drill a third hole for motor wire at end of housing where power source will be (within 1 1/4" from end cap). It is best to run motor wire through side or bottom of housing, be sure wire will not interfere with operation of the shade. If drilling top, wire hole MUST be sealed to prevent water damage to motor. **[Note: Top mount holes are on top of the housing, surface mount holes are on back of the housing. Pictures above demonstrate surface mount holes.]**



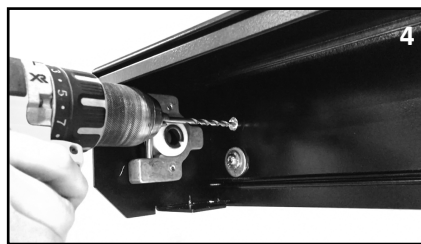
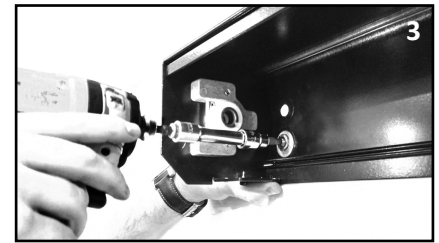
[STEPS 1-3] Start at one end of housing and remove 3 screws attached to housing and set aside. Repeat same process on other side of housing.

[STEPS 4-6] Align motor end bracket up to screw holes (holes you just removed screws from) and secure using 3 screws you set aside with Phillips screwdriver (Arrows pointing to holes in bracket). Repeat same process on opposite side with bearing end bracket.

At this point, place front of housing onto back of housing to ensure proper fitting.

BEFORE attempting to install on mounting surface: Put front and back housing together on the floor to make sure that the parts fit together. If the leading edges are malformed, or if either housing piece is bent, they will not assemble correctly. Contact us for help. This is usually caused by shipping damage. If they go together correctly proceed with the installation. If difficulty is experienced putting the front on once the back is mounted, this usually means the mounting surface is not flat and bolting it down has pulled the housing temporarily out of shape, and you will need to loosen the bolts and use spacers so that the back housing is flat.

2. Hang Back of Housing – 2 Person Job



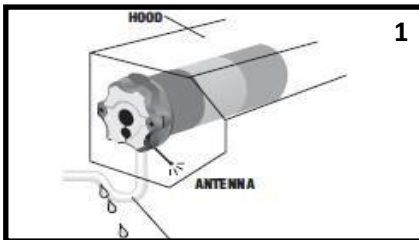
[STEPS 1-3] Once you decide where your housing will hang, hold back of housing up to surface and starting on one side, drill starter holes into mounting surface and secure first lag screw and washer on bottom hole. Make sure your housing is level. Repeat process on other side of housing.

[STEPS 4-5] Once housing is secure by itself, bolt your final bottom two lags and washers on each side. Bolts must be installed in upper corner of box—keep away from center of box, the area needs to be clear for the fabric roll.

3. Hang Tube With Fabric - 2 Person Job



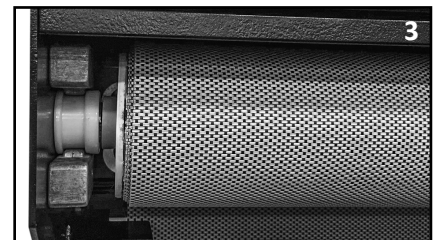
Remove bottom rail from pocket of shade fabric.



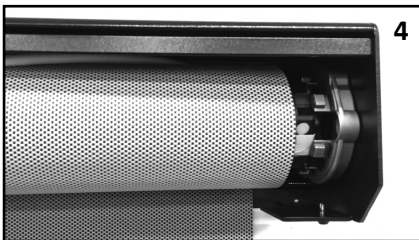
1



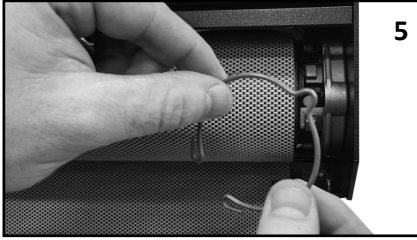
2



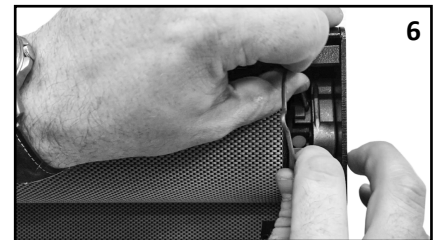
3



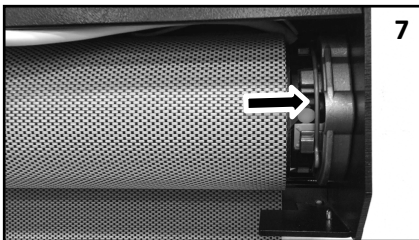
4



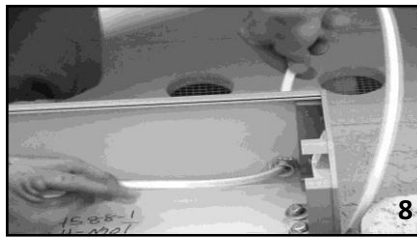
5



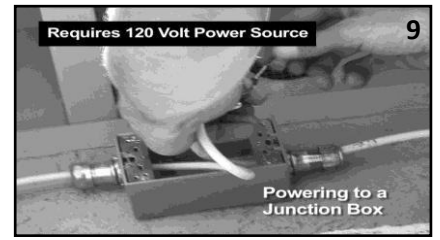
6



7



8



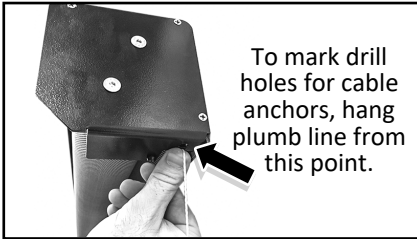
9

Requires 120 Volt Power Source

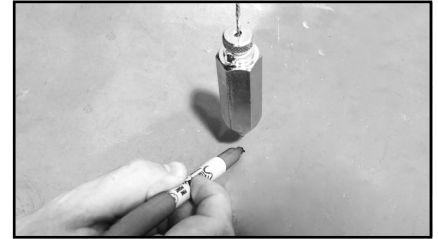
Powering to a Junction Box

PLEASE NOTE: In order to avoid water penetration, form a "drip loop" with the power cable and use hood when required (#1). Remove motor clip from star bracket; set aside (#2). Remove bolt from cradle idler and place white bearing on idler pin end. Make sure wire is placed in side channel (under yellow cap). Slip round pin into idler (#3). Push shade in and replace bolt to lock in place (#3). Slide motor end of shade into star bracket (#4). Reinstall motor clip onto bracket, making sure mouth snaps in place over bracket and motor head (#5-7). Feed motor wire through third hole in housing (#8). Tie motor wire into electrical source, such as junction box or plug in (#9).

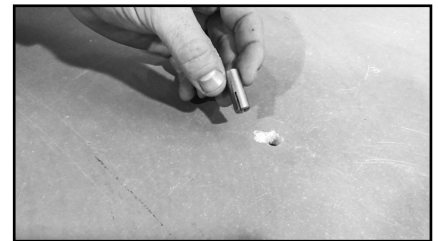
4. Install Cable Anchors-Skip if using HD L Brackets



Use Plumb Line to hang from hole in housing (where pointing to in picture) down to ground. Mark spot with pencil for cable anchor.

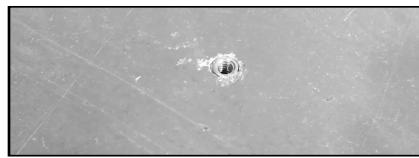


Drill hole with 1/4" masonry drill bit.
Hammer in tie wire drives.



[NOTE: Cable anchors should be hammered in as far as they can go.]

Repeat process on the other side.

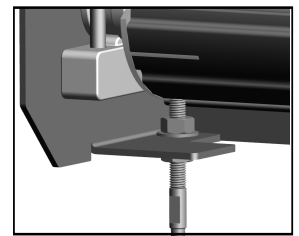
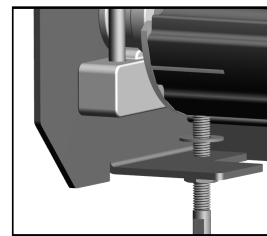
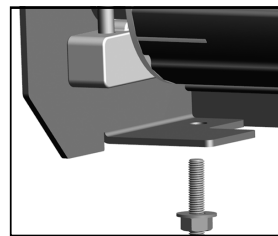


Thread eye bolt until it's tight and flush to the mounting surface.

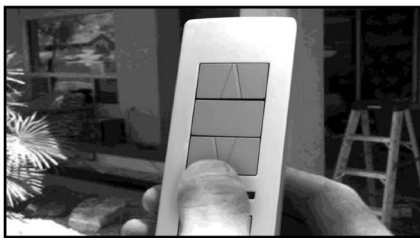
5. Install Cable Guide

Insert threaded rod up through hole in bottom of the end cap. Insert washer over rod and thread top nut

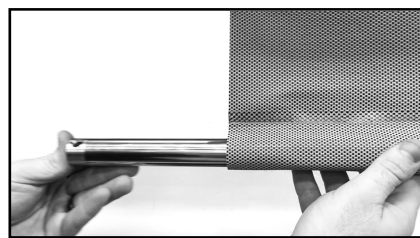
Finger tighten top nut. Leave approx. 6 threads exposed above nut.



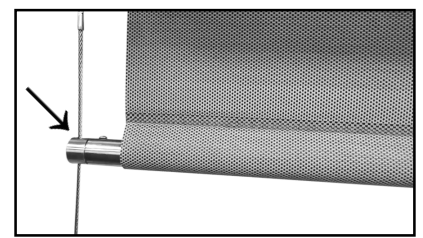
Repeat whole process on other side



Using provided remote, lower shade down slightly by pressing down arrow.



Insert bottom bar.



BE SURE CABLE IS INSERTED IN EYELET.

Pass cable through installed eye bolt and use simplex fastener to secure cable.

6. Assemble Simplex Fastener

Pass end of cable through clip on once side of screw thread.
Create a loop in the cable to required size.
Pass cable back through clip on opposite side of screw thread.
Place the plate and nut over screw head and thread to hold the cable securely.
Tighten nut using 7mm socket and lock into place.
Cut off excess cable.



Repeat process on other side



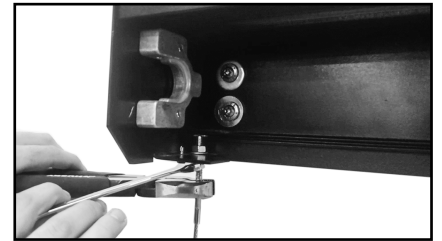
7. Tension Cable Guide



Hold cable sleeve while tightening the top nut using a 7/16 wrench.

The cable should be taut, having no slack.

Tighten the bottom nut to secure tension on the cable guide.



Repeat whole process on other side

8. Install Front/Bottom Housing



Remove hood screws on both sides of housing located underneath the end caps and set aside.



Set housing into groove at top and bring down to set into place.

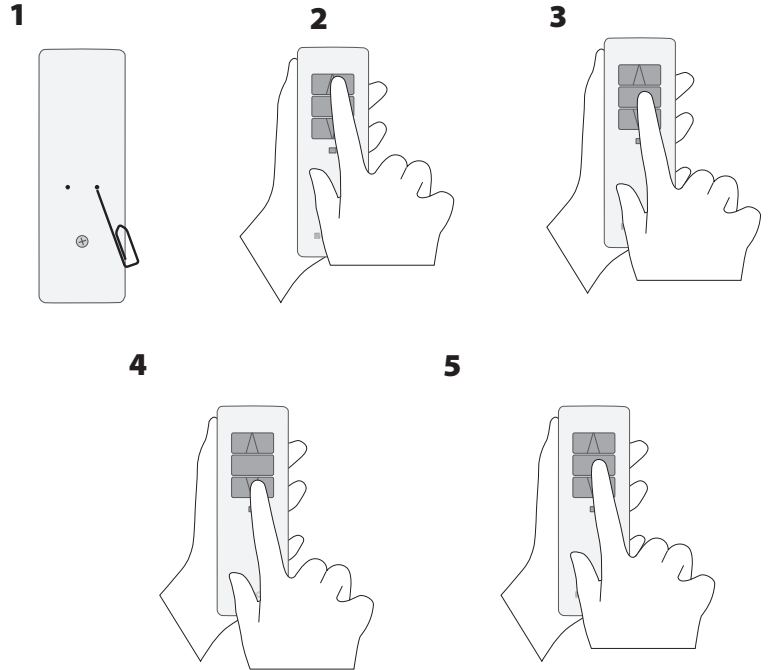


Install the two hood screws you put aside earlier onto bottom of front housing to secure, one on each side.

9. Adjust Motor Limits

XQ5 Premium Motors

[NOTE: FOR SLIM LINE 1 AND 5 CHANNEL REMOTES] Motors and remotes come pre-programmed. Power motor and find the channel the shade is programmed to. Turn remote over, using a paper clip, press and hold the programming button to the right until motor moves. Using the up arrow, walk motor to its upper limit, fine tuning with the up and down arrows. Once you have reached your upper limits, press and hold the middle stop button until motor makes a brief jog. Now using the down arrow, walk motor to its lower position, the height the shade was ordered at. It is important to leave sufficient fabric on roller tube for proper operation. Once you have reached the lower limit, press and hold the middle stop button until motor makes a brief jog. Motor limits have been set and you shade is now in user mode.



For additional shades, repeat this process for each individual shade.

10. Confirm Limits

Send the shade to both the upper and lower limits. The shade should roll up and down on cable guides and stop on its own at the programmed limit settings.

You're done! Enjoy!