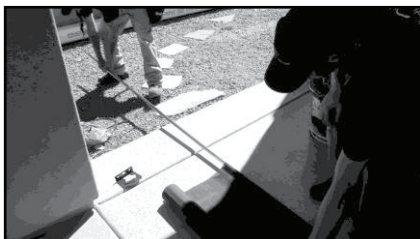


## Motorized (XQ5 Premium) Baby Grande or Grande Exposed Roll Shade with Cables Installation Instructions

Tools Needed	Hardware Provided (per shade)	Hardware Needed
Drill Measuring Tape Pencil 2" Level Plumb Line ¼" Masonry Drill Bit Hammer Linesmans Pliers Cable Cutters Phillips & Flat-Head Screw Driver 11/ 32 Socket or Open End Wrench 5/32 Allen Wrench	Brackets (2) Gear (1) Gear Bolts with Lock Washers (2) Cable with Tension Rod, Washers & Nuts (2) Cable Anchors (2) Eye bolts (2) Simplex Cable Fasteners (2 per shade) Remote (1) Per Order Motor Clip (1) Shade Tube (1)	5/16" X 4 ½" Lag Screws or Appropriate (4 per shade) 3/8" Flat Washers or Appropriate (4 per shade)

[\*BELOW INSTRUCTION PICTURES GO FROM LEFT TO RIGHT]

### 1. Set-Up Shade For Mounting



After parts are removed from packaging, temporarily remove bottom bar from tube fabric on flat surface to make shade lighter to handle.

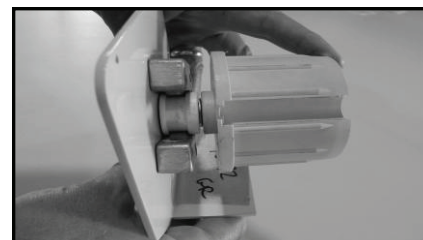
### 2. Install Brackets- Attach, Fix, Secure



Motor End Bracket

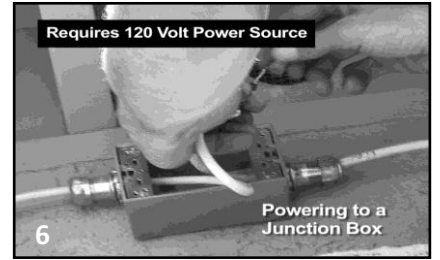
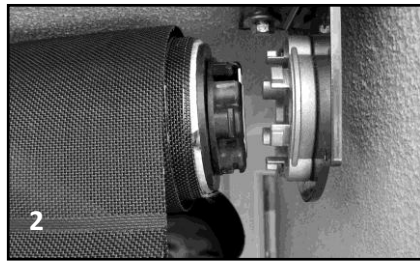
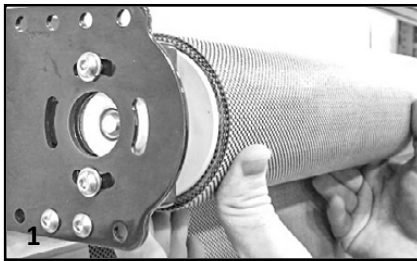


Idler Bracket



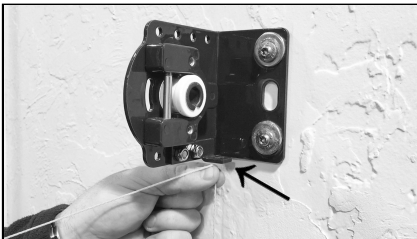
\*Please mount brackets at width ordered, measurements include mounting bolts on hardware. Remove motor clip from gear bracket prior to installing. Remove bolt from cradle idler and place white bearing on idler pin end. Using appropriate lag bolts and washers, start at one end and attach motor end bracket to mounting surface. Make sure bracket is level before securing screws. Repeat same process on opposite side with idler bracket.

### 3. Hang Tube With Fabric - 2 Person Job



PLEASE NOTE: In order to avoid water penetration, form a "drip loop" with the power cable and use hood when required. Make sure motor wire is placed inside channel (under yellow cap). . Remove motor clip from star bracket; set aside. Slide motor end of shade into star bracket (#2, 3). Slip round pin end into idler and re-install bolt to lock in place. Reinstall motor clip onto bracket, making sure mouth snaps in place over bracket and motor head (#4,5). Tie motor wire into electrical source, such as junction box or plug in (#6).

### 4. Install Cable Anchors

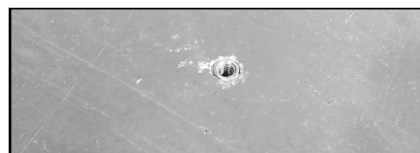
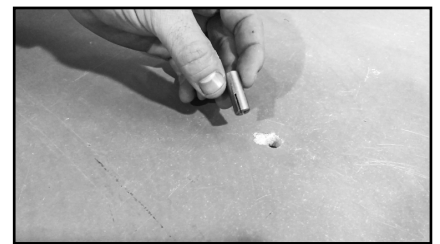


Use Plumb Line to hang from bracket (where pointing in picture) down to floor. Mark spot with pencil for cable anchor. Drill hole with 1/4" masonry drill bit.



Hammer in tie wire drives, making sure they are straight. (You will repeat this process on other side)

[NOTE: Cable anchors should be hammered in as far as they can go.]



Thread eye bolt until it's tight and flush to the mounting surface.



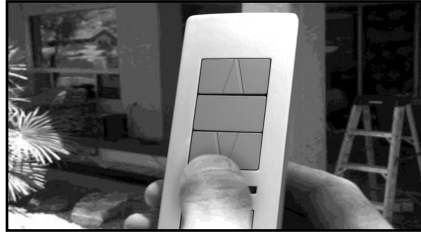
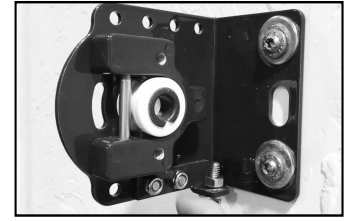
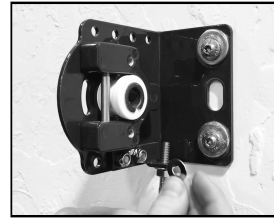
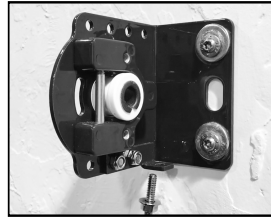
## 5. Install Cable Guide

Insert threaded rod into cable bracket. Put washer over rod and thread nut on top.

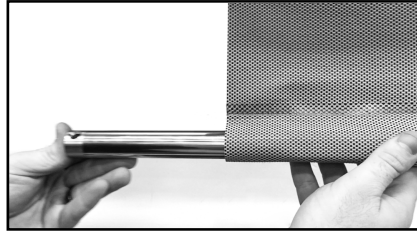
Finger tighten top nut.

Leave approx. 6 threads exposed above nut.

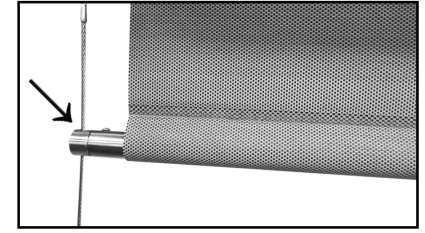
Repeat whole process on other side



Using provided remote, lower shade down slightly by pressing down arrow.



Insert bottom bar.



BE SURE CABLE IS INSERTED IN EYELET.

Pass cable through installed eye bolt and use simplex fastener to secure cable.

## 6. Assemble Simplex Fastener

Pass end of cable through clip on once side of screw thread.

Create a loop in the cable to required size.

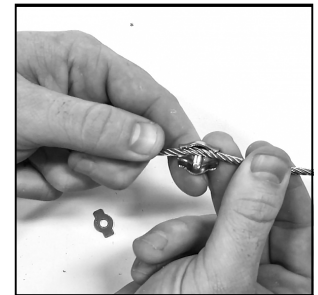
Pass cable back through clip on opposite side of screw thread.

Place the plate and nut over screw head and thread to hold the cable securely.

Tighten nut using 7mm socket and lock into place.

Cut off excess cable.

(You will repeat process on other side.)



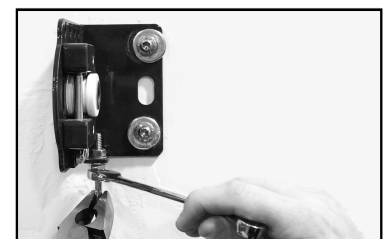
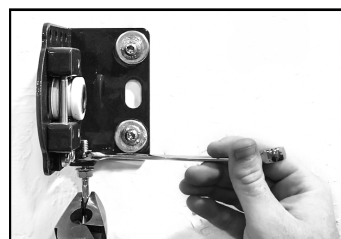
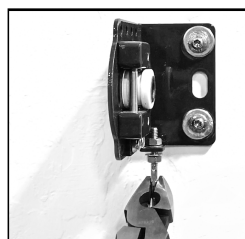
## 7. Tension Cable Guide

Hold cable sleeve while tightening the top nut using a 7/16 wrench.

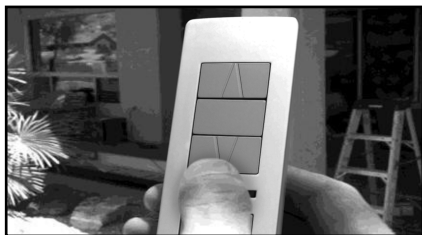
The cable should be taut, having no slack.

Tighten the bottom nut to secure tension on the cable guide.

Repeat whole process on other side

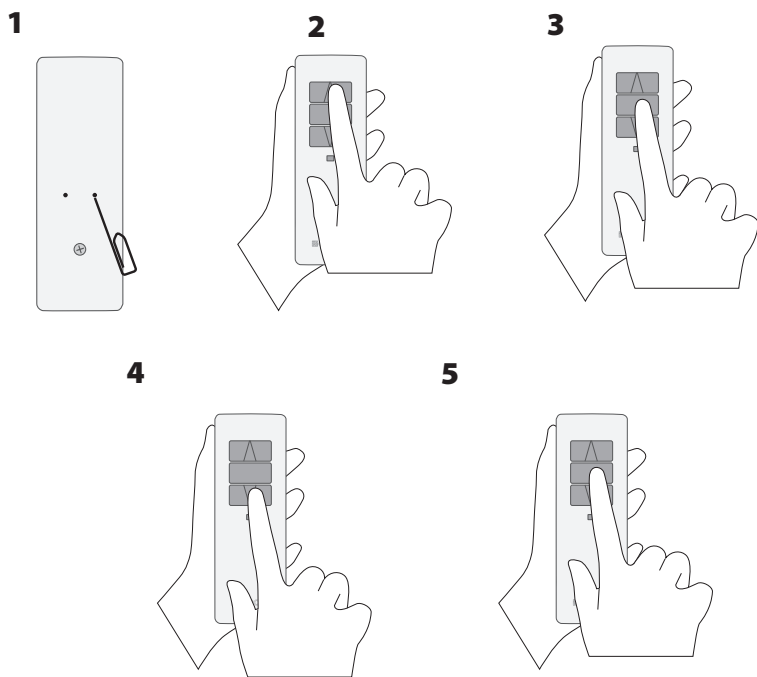


## 8. Operate Shade



Run shade up and down a few times by pressing the up and down arrows on the provided remote to be sure there are no adjustments needed.

## 9. Adjust XQ5 Premium Motor Limits



For Slim Line 1 and 5 Channel Remotes

Motors and remotes come pre-programmed. Power motor and find the channel the shade is programmed to. Turn remote over, using a paper clip, press and hold the programming button to the right until motor moves. Using the up arrow, walk motor to its upper limit, fine tuning with the up and down arrows. Once you have reached your upper limits, press and hold the middle stop button until motor makes a brief jog. Now using the down arrow, walk motor to its lower position, the height the shade was ordered at. It is important to leave sufficient fabric on roller tube for proper operation. Once you have reached the lower limit, press and hold the middle stop button until motor makes a brief jog. Motor limits have been set and you shade is now in user mode.

For additional shades, repeat this process for each individual shade.

## 10. Confirm Limits

Send the shade to both the upper and lower limits. The shade should roll up and down on cable guides and stop on its own at the programmed limit settings.

You're done! Enjoy!