

# PREMIUM REMOTES POWERED BY SW SUN CONTROL

## SMART LINE Remotes

1 Channel  
5 Channel

### TECHNICAL DATA

|                     |                    |
|---------------------|--------------------|
| Power Supply        | 3V Lithium Battery |
| Battery Life        | 2 Year             |
| Frequency           | 434.15 MHz         |
| Remote Range (feet) | 65                 |



### PROGRAMMING REMOTES

Remotes enable the user to control one or more motors with receiver, installed on awnings and screens. It is possible to set them up in order to create group commands and let more motors work simultaneously.

The radio signal is shown by the transmission LED. If the LED doesn't blink after the button pressure, then the battery has to be replaced.

**PLEASE NOTE:** do not use motors with remote controls in areas with risks of radio disturbs over the norm (i.e. airports or radio repeaters). These units may also be disturbed by telecommunication and/or transceiver systems with the same frequency.

Programming remotes/channels and setting the limits are made through the buttons shown on the below.

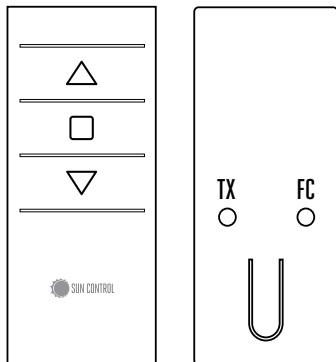


FIG. 1

**UP (1)** the motor lifts the rolling shade/awning up  
**STOP (2)** the rolling shade/awning stops

**DOWN (3)** the rolling shade/awning goes down  
**Prog-TX (4)** program the transmitter  
**Prog-FC (5)** set limits

#### PROGRAMMING Remote (FIG. 2)

**CAUTION:** If more motors with receiver have to be installed, it is important to power up only one motor at time during the first programming session, in order to avoid any interferences with the others.

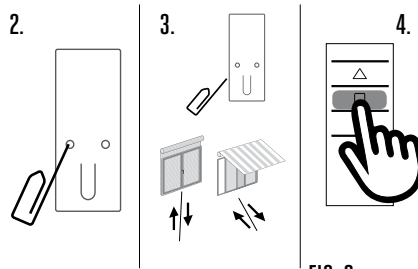


FIG. 2

1. Power up the motor to be programmed.
2. Hold **PROG-TX** pressed until the motor starts moving.
3. Check the rotation of the motor, then release **PROG-TX** (the motor stops).
4. Within 5 seconds press the corresponding button (i.e. **UP** if the motor rotates upwards or **DOWN** if vice versa).

In this way the remote has been programmed and the rotation of the motor has been synchronized.

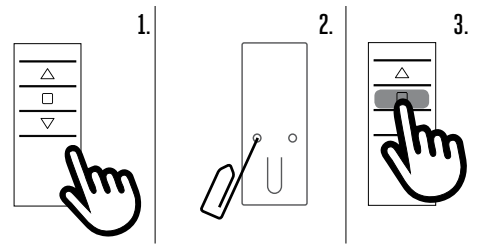
#### ADDING Remote (FIG. 2)

1. Hold **PROG-TX** pressed of a remote already paired until the motor starts moving.

2. Check the rotation of the motor, then release **PROG-TX** (the motor stops).
3. Within 5 seconds press the corresponding button (i.e. **UP** if the motor rotates upwards or **DOWN** if vice versa) on the new remote being added.

Additional remote is now added

#### CHECKING/CHANGING DIRECTION



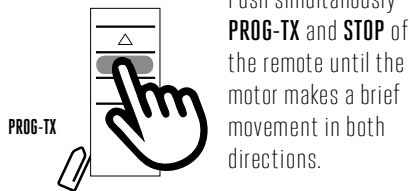
1. Press **UP** or **DOWN** the motor should go **UP** or **DOWN**, otherwise to change direction:
2. Press and hold **PROG-TX** button till the motor starts moving.
3. Press **STOP**: The motor makes a brief jog. Direction of the motor has been reversed.

| BRIEF JOG                         | LONG JOG                      |
|-----------------------------------|-------------------------------|
| Changing direction of the buttons |                               |
| Deleting a single remote          |                               |
|                                   | Erasing memory                |
| Memorize limit positions          |                               |
| Expire of programming mode        |                               |
| Setting intermediate position     | Erasing intermediate position |

# PREMIUM REMOTES POWERED BY SW SUN CONTROL

## PROGRAMMING REMOTES CONT.

### ERASING Remotes

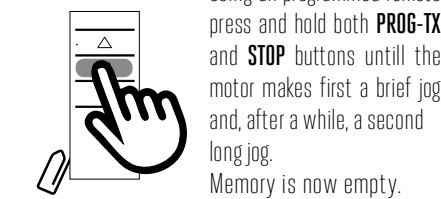


Push simultaneously **PROG-TX** and **STOP** of the remote until the motor makes a brief movement in both directions.

Only the remote used for this procedure has been deleted from motor memory.

### RESET Remote MEMORY (DELETING ALL THE Remotes OR CHANNELS OR SENSORS)

#### Option 1



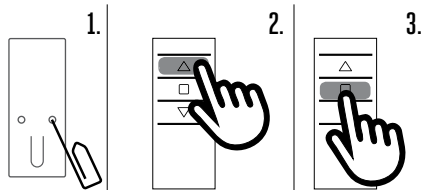
Using an programmed remote press and hold both **PROG-TX** and **STOP** buttons until the motor makes first a brief jog and, after a while, a second long jog. Memory is now empty.

#### Option 2

- Using a new remote (not programmed), switch the motor power supply **OFF**. Then switch it **ON**.
- Within 8 seconds, using any Sun Control remote, press and hold both **PROG TX** and **STOP** buttons until the motor makes a long jog. Memory is now empty.

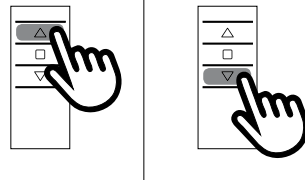
### LIMIT SWITCH SETUP

(ATTENTION: Just for motors with electronic limit switch). ALWAYS SET THE UP LIMIT SWITCH FIRST.



- Push **PROG-FC** until the motor makes a brief movement in both directions  
**Note: during "programming mode" the operations are in "deadman control"**
- Press and hold the **UP** button and run the motor to the desired **UP** limit position.
- Press **STOP** to set the **UP** limit position. The motor makes a brief jog.

4. 5.

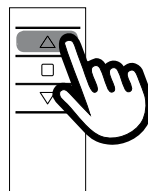


- Press and hold the **DOWN** button and run the motor to the desired **DOWN** limit position.
- Press **STOP** to set the **DOWN** limit position.

The motor makes a brief jog.

**Note: Accurate limit setting can be performed when UPWARD or DOWNWARD by pressing a second time PROG-FC: the motor then moves slowly in steps towards to the desired limit. Always press STOP button to set the limit position.**

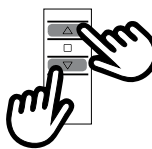
### AUTOMATIC SETTING OF THE LIMITS



For limits set with torque sensor (mechanical stop of cassette awnings/shades), press and hold **UP** button until the bottom bar hits the cassette or shade box.

A short jog will indicate that the **UP** position has been memorized. The same procedure can be followed for **DOWN** limit but only for roller shades.

### INTERMEDIATE POSITION SETUP



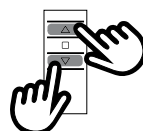
Stop the shade/awning in the desired intermediate position, then press simultaneously the **UP** and **DOWN** buttons until the motor makes a brief movement in both directions. The intermediate position has been setup.

### RECALLING THE INTERMEDIATE POSITION



Keep the **STOP** button pressed at least for 3 seconds: the shade/awning will move till it reaches the intermediate position.

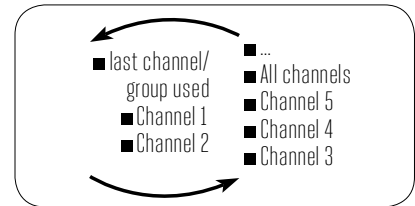
### ERASING THE INTERMEDIATE POSITION



Press simultaneously the **UP** and **DOWN** buttons until the motor makes a brief movement in both directions.

### CHANNEL MANAGEMENT (5 Channel)

By pressing **SELECTION**, you pass through the channels sequentially in this order:



Once the desired channel selected, you can proceed to activate the corresponding motor by using **UP**, **STOP** and **DOWN** buttons. Moreover, you can also memorize up to 8 combinations of groups of channels.

### CREATING A GROUP OF CHANNELS

- Select by **SELECTION** the first channel to which you will add the rest.
- Press and hold **SELECTION** until the next channel's LED starts to flash.
- By **SELECTION** select the channel to be added.
- To confirm the channel to be added hold **SELECTION**. The channel LED will stop flashing and remain lit then the next channel starts to flash. Continue this sequence until all the desired channels are added. To memorize the group press **STOP** or wait that the LEDs turn off.

### SELECTING A MEMORIZED GROUP OF CHANNELS

With all the LEDs off, press **SELECTION** and hold: the channels of the last group created will turn on. By pressing **SELECTION** again you pass through the memorized groups. By selecting the desired group you can activate the motors by **UP**, **STOP**, **DOWN**. **IMPORTANT:** you can select the 8 last memorized combinations. The memorization of further groups will require to delete the already memorized channels starting from the oldest.

### BATTERY SUBSTITUTION

- Remove the screw on the back and the cover.
- Remove the old battery
- Insert the new battery respecting the correct polarity

**IMPORTANT:** Batteries contain polluting substances. After removing, throw them in the designated batteries collection points.