

Baby Grande or Grande Crank Shade with Cables and Housing  
Installation Instructions

Tools Needed	Hardware Provided (per shade)
<b>Drill</b> <b>3/8" Metal Drill Bit</b> <b>Screwdriver (Flat &amp; Phillips)</b> <b>Measuring Tape</b> <b>Pencil</b> <b>4" Level</b> <b>Plumb</b> <b>Line</b> <b>1/4" Masonry Drill Bit</b> <b>Hammer</b> <b>Linesmans Pliers</b>	<b>End Caps (Brackets) (2)</b> <b>Housing(1)</b> <b>Shade Fabric Tube (1)</b> <b>Cable Kit</b> <b>Hand Brace (1)</b>

Cable Kit	Hardware Needed
<b>Cable with Tension Rod (2)</b> <b>Washers &amp; Nuts (2 sets)</b> <b>Cable Anchors (2)</b> <b>Eye bolts (2)</b> <b>Simplex Cable Fasteners (2)</b>	<b>5/16"X4 1/2" Torx Screws or Appropriate (4 or more)</b>  <b>3/8" Flat Washers or Appropriate</b> <b>(4 per shade)</b>

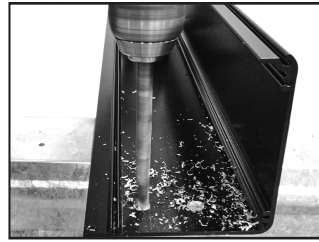
[\*These instructions represent a surface mount installation. Pictures Go From Left to Right ]

### Before you begin

Before starting, ensure that neither part of the housing is bent and that they fit together by assembling just the front and back on the floor.

## 1. Prepare Back of Housing

Drill third hole for motor wire at end of housing where power source will be.

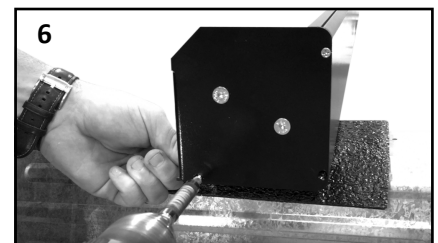
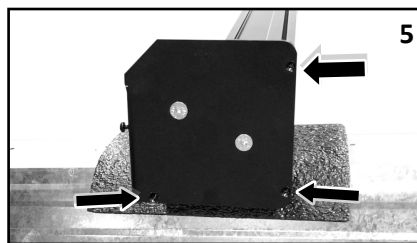
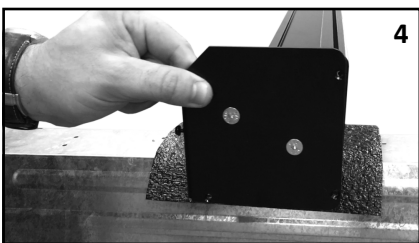
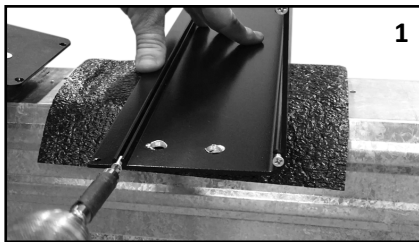


FOR BABY GRANDE: Starting at one at end of housing, make two mounting hole marks 1 1/4" in from end cap on your housing. This is so that the bolt heads will not be behind the fabric roll so they cannot contact the fabric and damage it. You will need to 'toe nail' the bolts (insert at an angle.)

FOR GRANDE: Starting at one end of the housing, make two mounting hole marks 2" in from the end cap on your housing.

Using a 3/8" metal drill bit, drill the two mounting holes. Repeat this process on other side of housing with other end cap.

**[Note: Top mount holes are on top of the housing, surface mount holes are on back of the housing. Pictures above demonstrate surface mount holes.]**

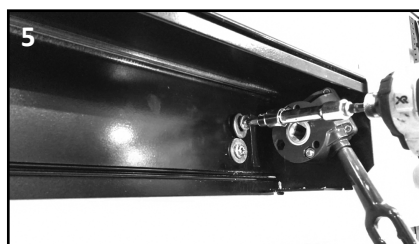
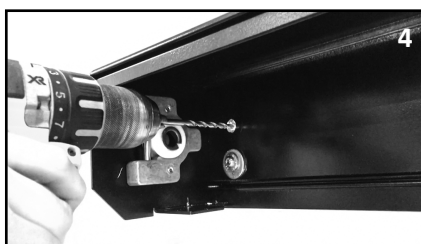
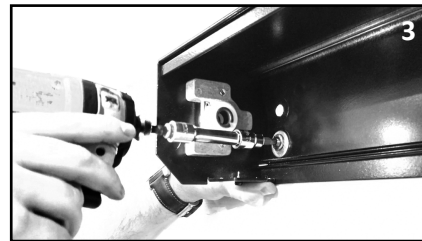


[STEPS 1-3] Start at one end of housing and remove 3 screws attached to housing and set aside. Repeat same process on other side of housing.

[STEPS 4-6] Align gear bracket up to screw holes (holes you just removed screws from) and secure bracket using 3 screws you set aside with Phillips screwdriver (Arrows pointing to holes in bracket). Repeat same process on opposite side with idler bracket.

**BEFORE attempting to install on mounting surface:** Put front and back housing together on the floor to make sure that the parts fit together. If the leading edges are malformed, or if either housing piece is bent, they will not assemble correctly. Contact us for help. This is usually caused by shipping damage. If they go together correctly proceed with the installation. If difficulty is experienced putting the front on once the back is mounted, this usually means the mounting surface is not flat and bolting it down has pulled the housing temporarily out of shape, and you will need to loosen the bolts and use spacers so that the back housing is flat.

## 2. Hang Back of Housing – 2 Person Job



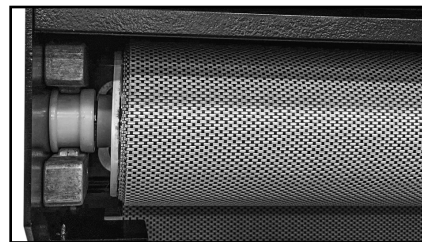
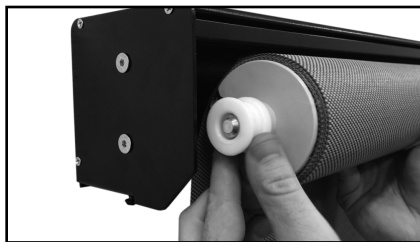
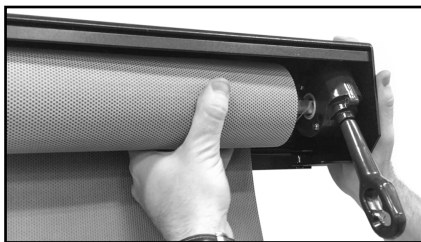
[STEPS 1-3] Once you decide where your housing will hang, hold back of housing up to surface and starting on one side, drill starter holes into mounting surface and secure first lag screw and washer on top hole. Make sure your housing is level. Repeat process on other side of housing.

[STEPS 4-5] Once housing is secure by itself, bolt your final bottom two lags and washers on each side. Bolts must be installed in upper corner of box—keep away from the center of the box.

## 3. Hang Tube With Fabric - 2 Person Job

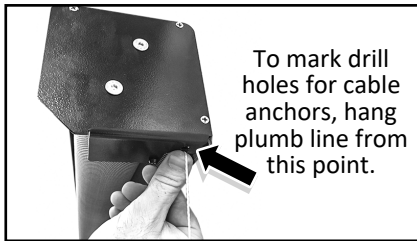


Remove bottom rail from pocket of shade fabric.

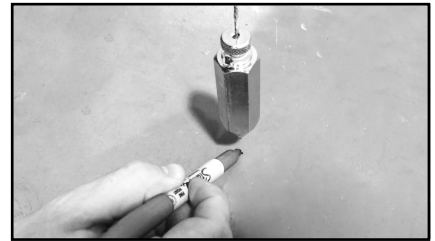


Remove bolt from cradle idler and place white bearing on pin end. Starting on gear end, insert square pin end of shade tube into hole in end cap bracket. On opposite side, slide round pin end of tube into idler end cap slot. Replace bolt on cradle idler to lock in place.

## 4. Install Cable Anchors



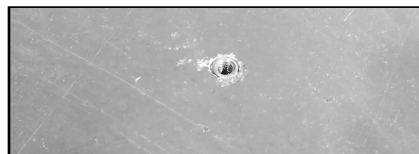
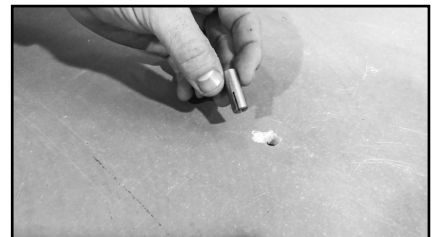
Use Plumb Line to hang from hole in housing (where pointing to in picture) down to ground. Mark spot with pencil for cable anchor.



Drill hole with 1/4" masonry drill bit.  
Hammer in tie wire drives.

**[NOTE: Cable anchors should be hammered in as far as they can go.]**

Repeat process on the other side.

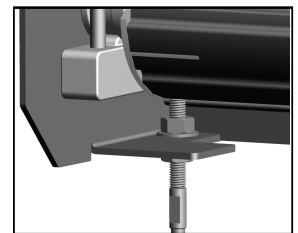
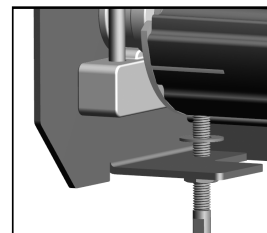
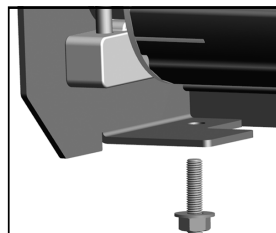


Thread eye bolt until it's tight and flush to the mounting surface.

## 5. Install Cable Guide

Insert threaded rod up through hole in bottom of the end cap. Insert washer over rod and thread top nut

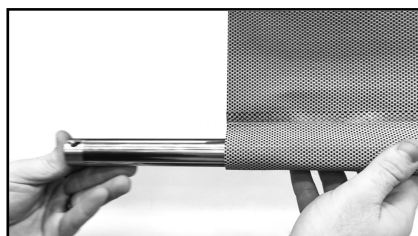
Finger tighten top nut. Leave approx. 6 threads exposed above nut.



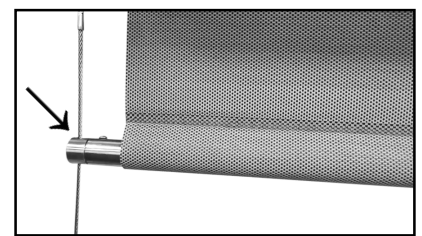
Repeat whole process on other side



Using provided hand brace, lower shade down slightly.



Insert bottom bar.



**BE SURE CABLE IS INSERTED IN EYELET.**

Pass cable through installed eye bolt and use simplex fastener to secure cable.



## 6. Assemble Simplex Cable Fastener

Pass end of cable through clip on once side of screw thread.

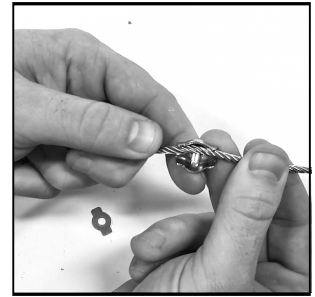
Create a loop in the cable to required size.

Pass cable back through clip on opposite side of screw thread.

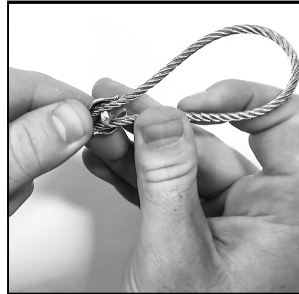
Place the plate and nut over screw head and thread to hold the cable securely.

Tighten nut using 7mm socket and lock into place.

Cut off excess cable.



Repeat process on other side



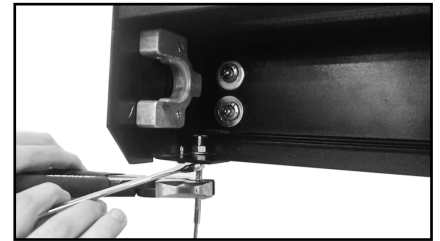
## 7. Tension Cable Guide



Hold cable sleeve while tightening the top nut using a 7/16 wrench.

The cable should be taut, having no slack.

Tighten the bottom nut to secure tension on the cable guide.



Repeat whole process on other side

## 8. Install Front/Bottom Housing



Before securing front housing, first rotate gear to lie vertical



Remove hood screws on both sides of housing located underneath the end caps and set aside.



Set housing into groove at top and bring down to set into place.

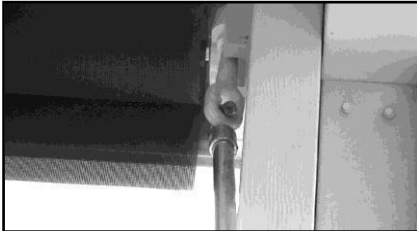


Install the two hood screws you put aside earlier onto bottom of front housing to secure, one on each side.



Your set up should now be complete and look like this.

## 9. Operate Shade



Slide hook end of hand brace into eyelet of gear on shade. Rotate hand brace in one direction to raise. Rotate in opposite direction to lower. Shade rolls up and down on cable guides.

You're done! Enjoy