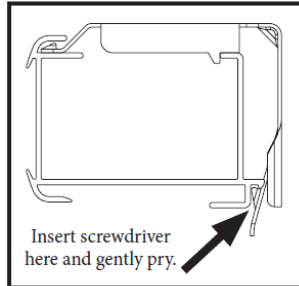
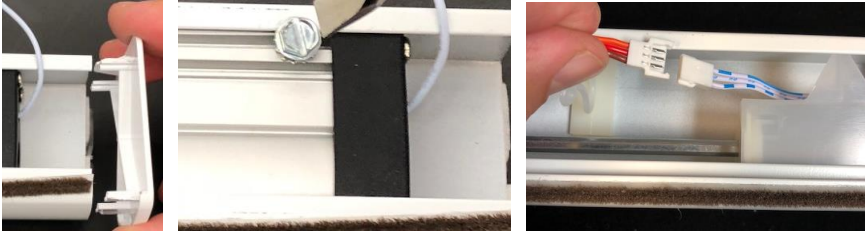


Rechargeable Motor Replacement - Cellular Headrail

Step 1: Remove the shade from the window



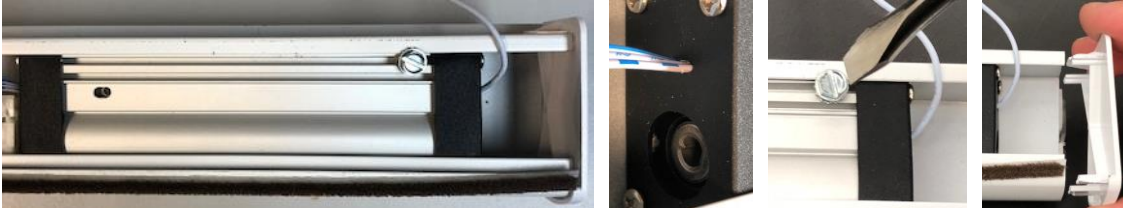
Step 2: Remove the end cap on the motor side, loosen motor screw and disconnect motor wire.



Step 3: Slide motor out of headrail, off of v-shaft. See shaft below. Be sure to keep shaft in Spools.



Step 4: Replace motor, align v-shaft into motor hole, attach screw, connect wire and attach end cap.



Step 5: Program motor to remote following Installation Instructions.