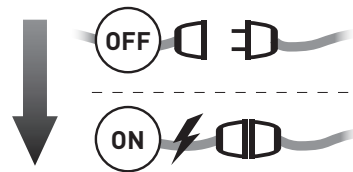


The buttons shown on the left are used to program the transmitters and specific channels. The programming button's (buttons 4 and 5) locations can be placed differently depending on the transmitter model. Shown in this guide is the Emitto Slim line transmitter.

UP (1) the rolling shade/awning moves up
STOP (2) the rolling shade/awning stops
DOWN (3) the rolling shade/awning moves down

SYNC (4) program the transmitter
LIMIT (5) set limits

CONNECT POWER TO THE MOTOR



PROGRAMMING A TRANSMITTER (Sec. 1)

- 1 Press and hold the **SYNC** button on the back of the transmitter **OR** the white button on the head of the motor until the motor starts moving
- 2 Check the motor rotation (**UP** or **DOWN**) then release the **SYNC** button or the white button (the motor now stops)
- 3 Within 5 seconds, press the corresponding button (**UP** if the motor turns upwards or **DOWN** if the motor turns downwards.) This will set the direction of the motor. If the incorrect button is pressed, the controls will be reversed. To fix, see Sec. 3.

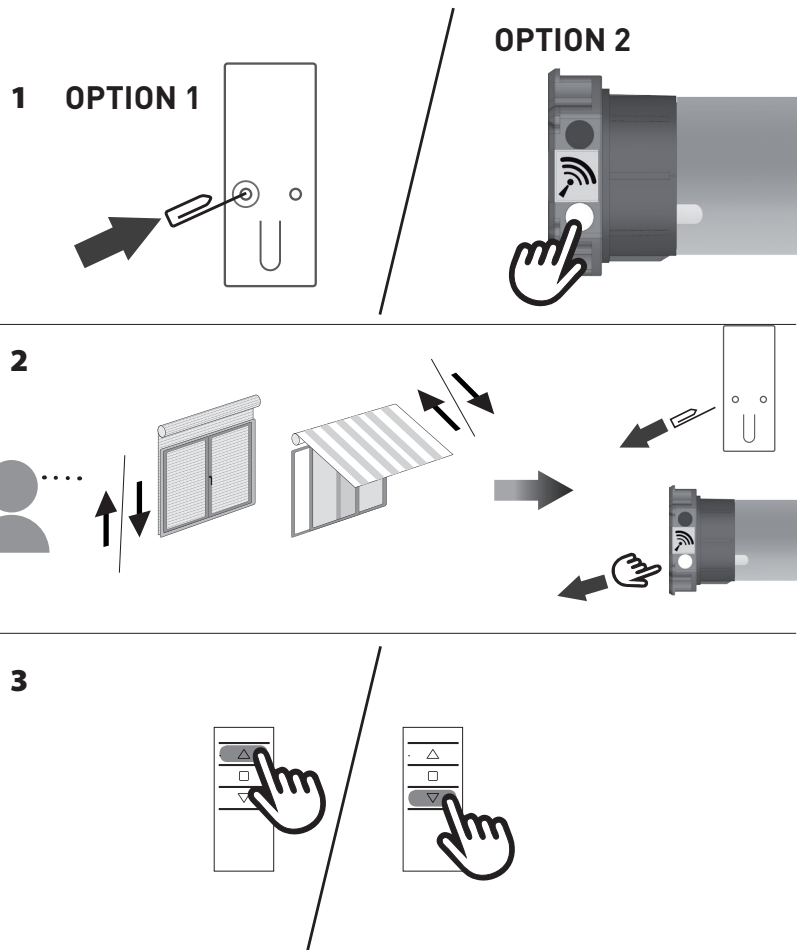
Transmitter is now programmed

ADDING A NEW TRANSMITTER (Sec. 2)

When adding new transmitters, begin with the motor position somewhere inbetween the two limits. This allows the motor to have room to move, and allows the direction that the motor moves to be discernible.

- 1 Press and hold the **SYNC** button on the back of a transmitter **ALREADY** paired until the motor starts moving in one direction
- 2 Check the motor rotation (**UP** or **DOWN**) then release the **SYNC** button (the motor now stops)
- 3 Within 5 seconds, press the corresponding button (**UP** if the motor turns upwards or **DOWN** if the motor turns downwards) on the **NEW** transmitter being added. This will set the direction of the motor.

Additional transmitter is now added

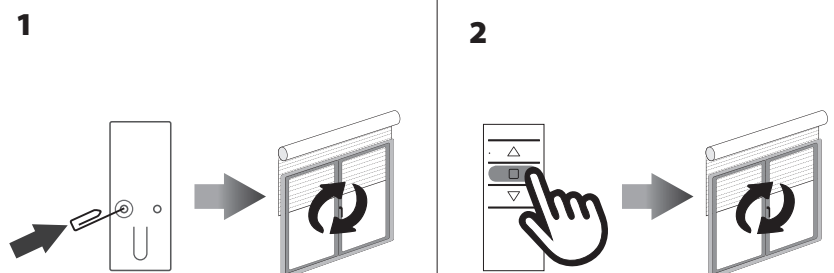


CHECKING / CHANGING DIRECTION (Sec. 3)

To check the direction, press the **UP** or **DOWN** button. The motor will go **UP** or **DOWN** accordingly, if the direction needs to be changed:

- 1 Press and hold the **SYNC** button on the back of transmitter until the motor starts moving
- 2 Press the **STOP** button; the motor makes a brief jog. The direction of the motor has been reversed

IMPORTANT: the change of direction procedure must be performed before initiating the limit setting procedure, otherwise limits will need to be reset



SETTING THE LIMITS (Sec. 4)

IT IS MANDATORY TO SET THE "UP" LIMIT FIRST EVERY TIME

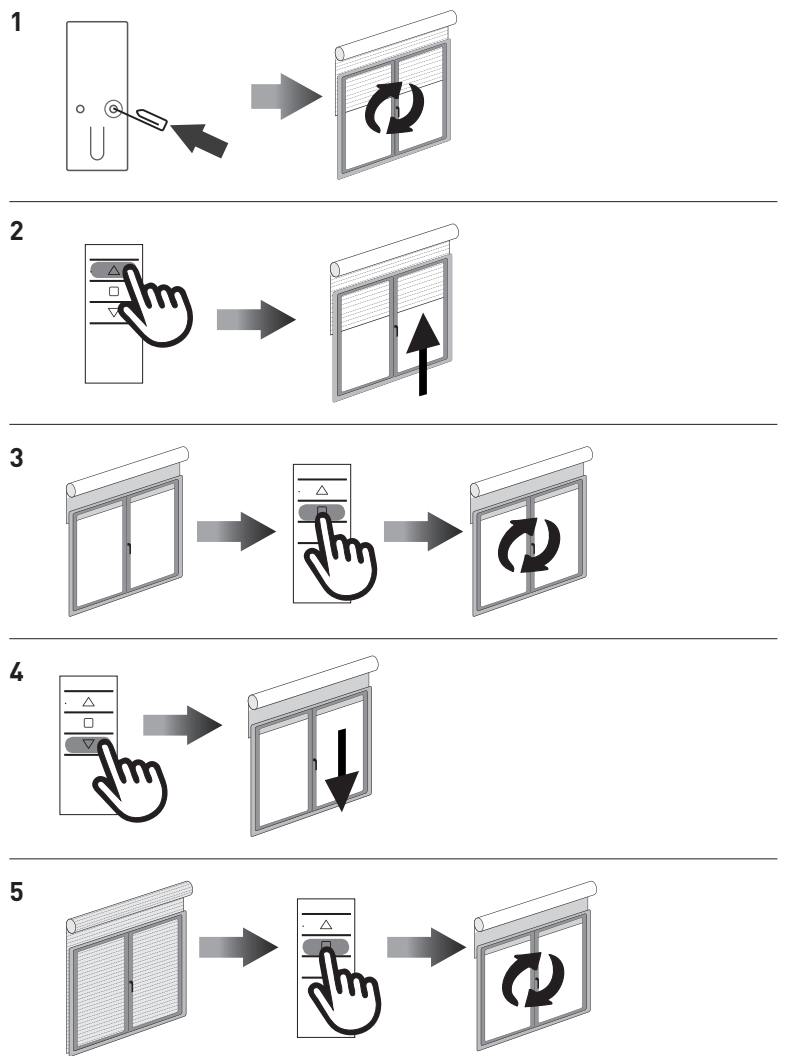
Run the motor to an intermediate position inbetween the two desired limits. The motor needs to move in the direction of the limit in order for the limit to be properly set.

- 1 Press and hold the **LIMIT** button on the back of transmitter until the motor makes a brief jog

Note: during "limit setting mode" the operations are in "deadman control" (The UP and DOWN buttons must be held down in order for the motor to move.)

- 2 Press and hold the **UP** button and run the motor to the desired **UP** limit position.
- 3 Press the **STOP** button to set the **UP** limit position. The motor makes a brief jog to confirm.
- 4 Press and hold the **DOWN** button and run the motor to the desired **DOWN** limit position.
- 5 Press the **STOP** button to set the **DOWN** limit position. The motor makes a brief jog to confirm.

Note: Accurate limit setting can be performed by pressing the LIMIT button a second time: the motor will then will reduce its output speed, moving slowly in steps towards the desired limit. Always press the STOP button to set the limit position.



SETTING THE LIMITS INDIVIDUALLY (Sec. 5)

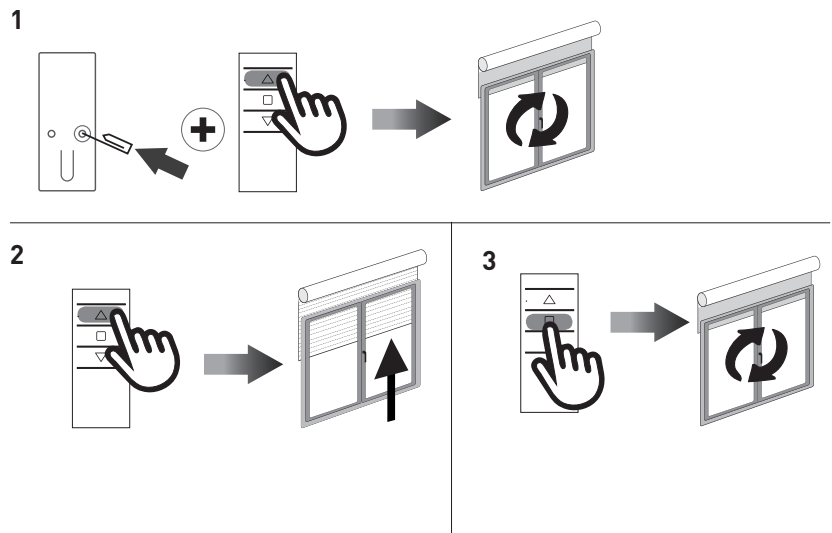
If the limits need to be changed after the initial limit setting procedure, it is possible to change the limit positions individually. One limit can be set without the other limit needing to be set. The motor can be in any position to initiate the procedure.

TO CHANGE THE UP LIMIT:

- 1 From any point between the existing limits, press and hold both the **LIMIT** button and the **UP** button until the motor makes a brief jog.

Note: during "limit setting mode" the operations are in "deadman control" (The UP and DOWN buttons must be held down in order for the motor to move.)

- 2 Press and hold the **UP** button until the desired new **UP** limit is reached.
- 3 Press the **STOP** button to set the limit. The motor makes a brief jog to confirm. The new **UP** limit is set.

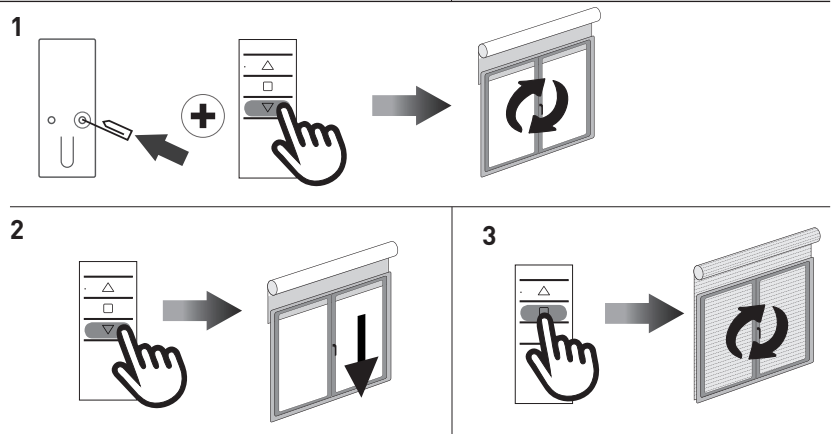


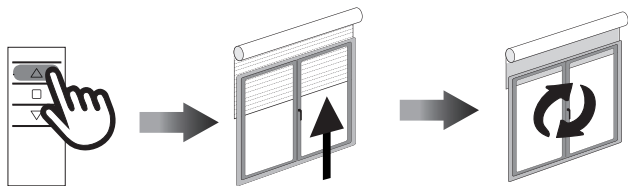
TO CHANGE THE DOWN LIMIT:

- 1 From any point between the existing limits, press and hold both the **LIMIT** button and the **DOWN** button until the motor makes a brief jog.

Note: during "limit setting mode" the operations are in "deadman control" (The UP and DOWN buttons must be held down in order for the motor to move.)

- 2 Press and hold the **DOWN** button until the desired new **DOWN** limit is reached.
- 3 Press the **STOP** button to set the limit. The motor makes a brief jog to confirm. The new **DOWN** limit is set.



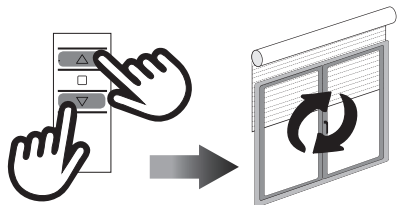


AUTOMATIC SETTING OF THE LIMITS (Sec. 6)

For limits set with torque sensor (mechanical stop of shutters or cassette awnings/shades), press and hold the **UP** button until the bottom bar hits the cassette or shutter box. A short jog will indicate that the **UP** position has been memorized. The same procedure can be followed for the **DOWN** limit but only for roller shutters.

PREFERRED POSITION (Sec. 7)

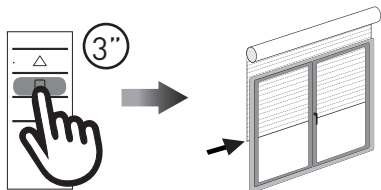
1. SETTING AN PREFERRED POSITION



Operate the motor to and stop it at the desired intermediate position, then press both the **UP** and **DOWN** buttons together until the motor makes a brief jog to confirm.

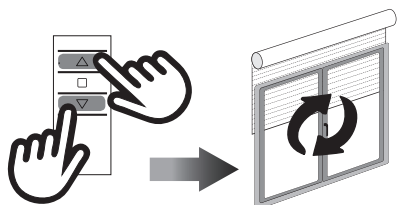
The intermediate position is now set.

2. RECALLING THE PREFERRED POSITION



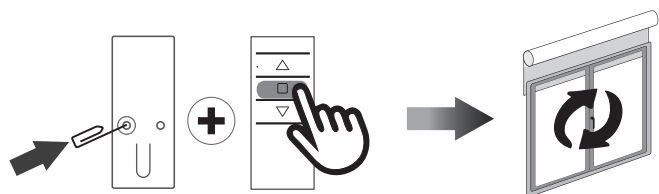
Press and hold the **STOP** button for 3 seconds: the motor will move to and stop at the intermediate position.

3. ERASING THE PREFERRED POSITION



Press both the **UP** and **DOWN** buttons until the motor makes a brief jog to confirm.

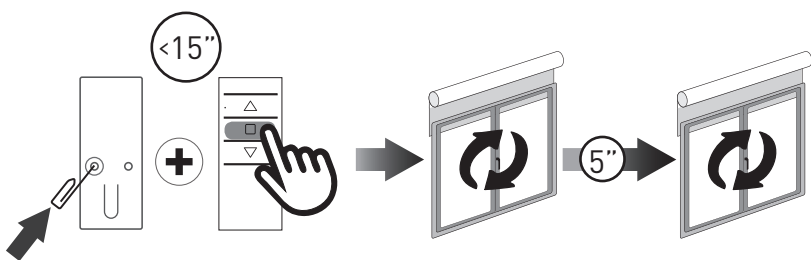
The intermediate position is now erased.



DELETING A TRANSMITTER OR A CHANNEL (Sec. 8)

Using the transmitter to be deleted press and hold both the **SYNC** and **STOP** buttons until the motor makes a brief jog to confirm.

Only the transmitter used for this procedure has been deleted from motor memory

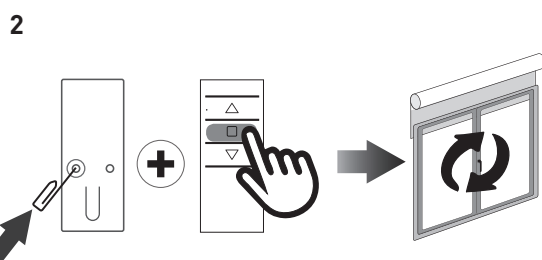
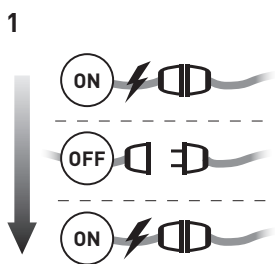


RESET TRANSMITTER MEMORY (Sec. 9) (DELETING ALL THE TRANSMITTERS OR CHANNELS OR SENSORS)

Option 1 - Using a programmed transmitter

Press and hold both the **SYNC** and **STOP** buttons for at least 15 seconds: to confirm that the operation has completed, the motor first makes a brief jog and after 5 seconds it makes an additional jog. This operation will not be successful unless it makes both jogs.

Memory is now empty

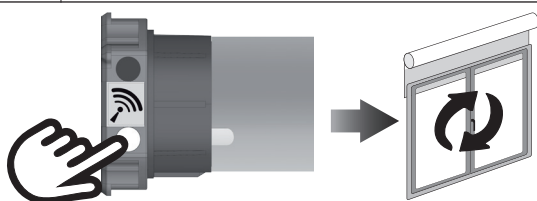


Option 2 - Using a new transmitter without ID (not paired).

1 Switch the power to the motor OFF, then switch it back ON.

2 Within 8 seconds, using any Gapos transmitter, press and hold both the **SYNC** and **STOP** buttons until the motor makes a jog.

Memory is now empty



Option 3 - White button on the head of the motor

Press and hold the white button on the head of the motor until the motor starts to move. Release the white button.

All transmitters have been erased.