

# Unusual Grande Mountings Solved with a Custom Bracket

Note: cut all brackets to fit housing box dimension minus  $\frac{1}{2}$ "

(illustrated with 12" piece)

(Bracket material procured from <https://www.amazon.com/dp/B0B69MB7Q4?th=1> )

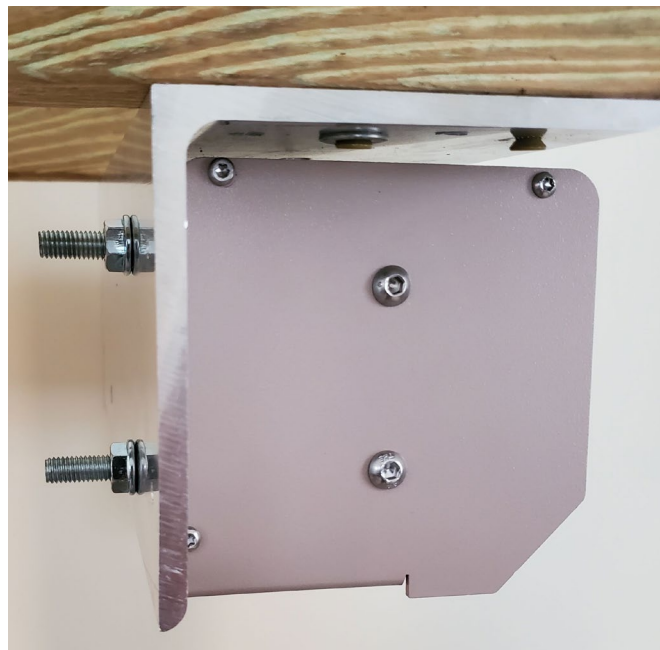
End mounting to a post or wall



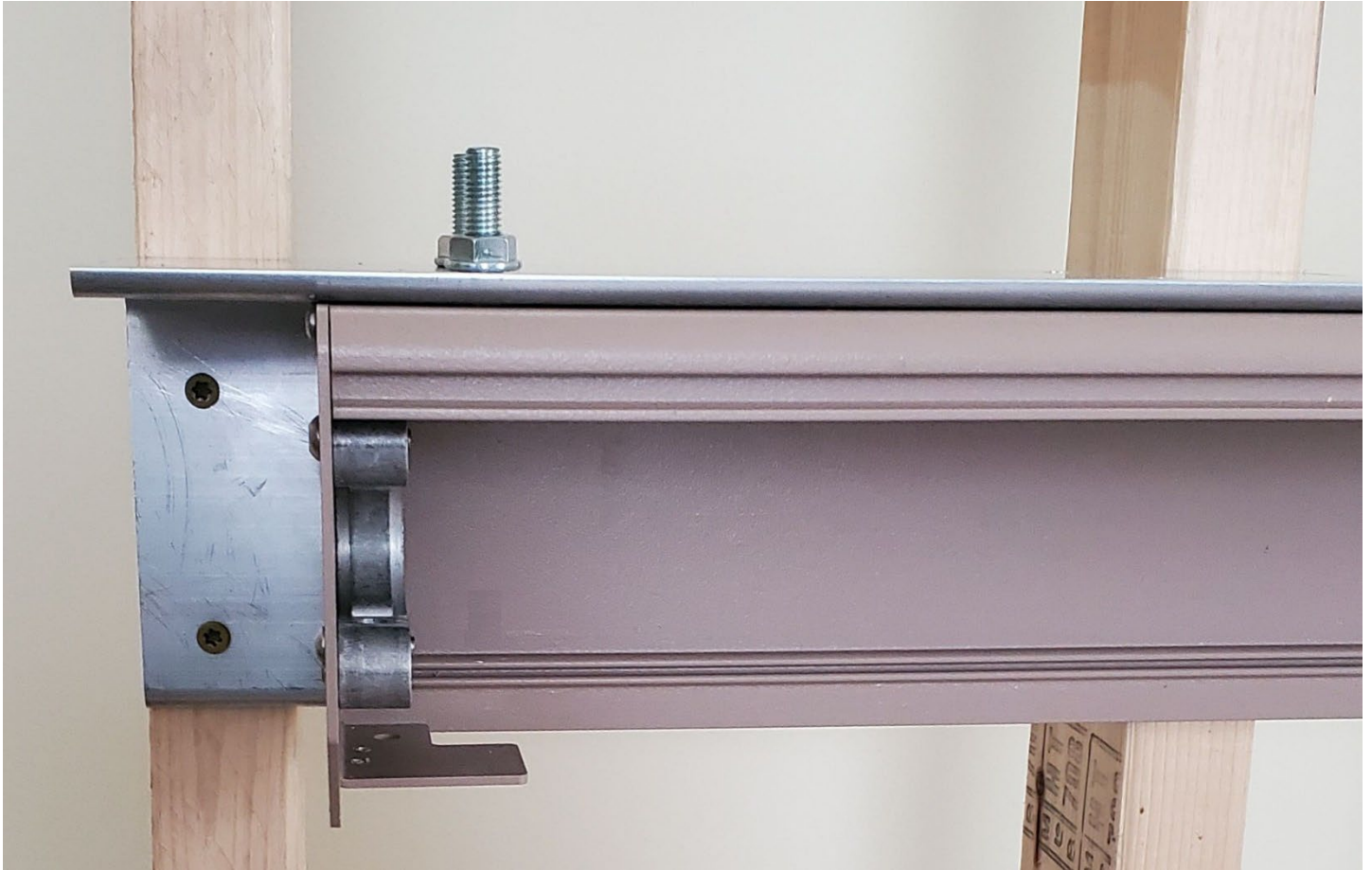
Or



Under mounting to rafters  
(where mounting fasteners do not line up with a rafter)



Surface mounting to studs  
(where mounting fasteners do not line up with studs)





Mounting to a post with an underlying railing

