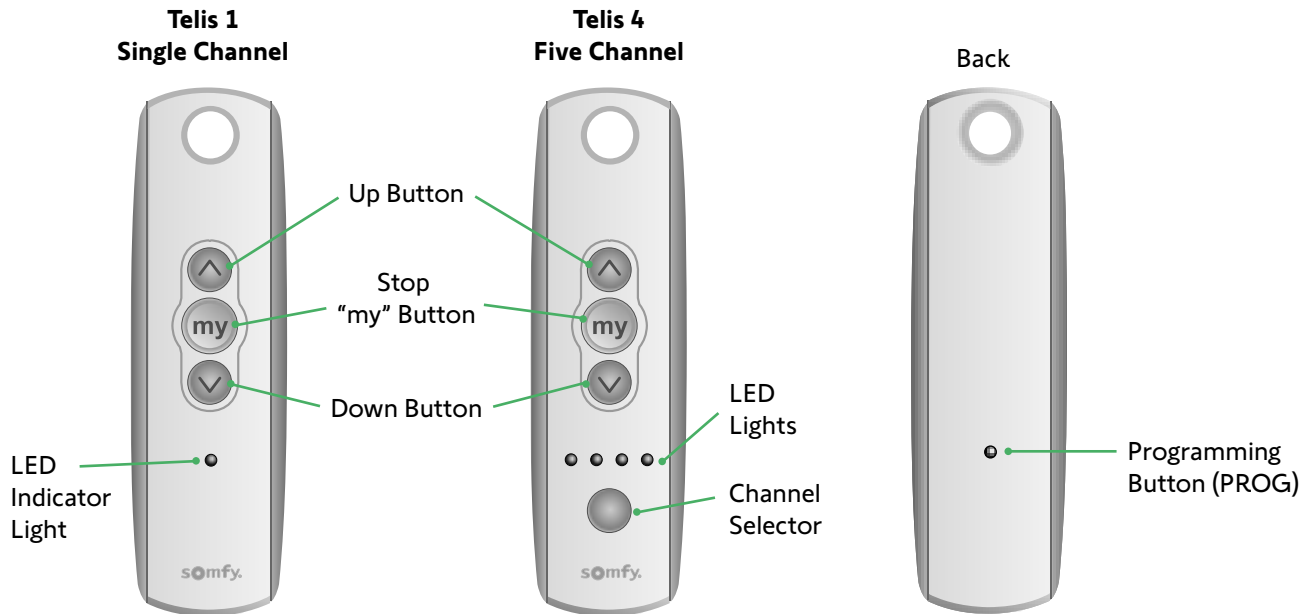


Part Number:
Telis 1: 1810643
Telis 4: 1810645

Telis 1 & 4 RTS Patio

The Telis RTS Patio is a hand-held remote to operate awnings, screens and shutters featuring Radio Technology Somfy®. The RTS is omni-directional, so there is no need to aim the remote at the product being controlled.

1 Introduction



2 Programming - Adding a new remote or operating channel

When adding a new remote control or channel to motorized window coverings, use a previously paired Telis remote control or if no Telis remote has been paired, follow step **C** below.

A. Adding a Telis 1 RTS remote control only:

1. Using the previously paired Telis remote, press and hold the programming button on back of remote until window covering moves up and down slightly or "jogs."
2. On the new Telis 1 remote, briefly press the programming button until the window covering jogs. Window covering is now paired with the new Telis remote.

B. Adding a Telis 4 RTS remote control only:

1. Using the previously paired Telis remote, press and hold the programming button on back of remote until window covering moves up and down slightly or "jogs."
2. With the new Telis 4 remote, assign the window coverings to a control channel by using the Channel Selector button. (The LED will illuminate each time the Channel Selector button is pressed, indicating the selected channel)
3. Briefly press the programming button on the new Telis 4 remote until the motorized window covering jogs. The window covering is now paired with the new Telis 4 remote.

C. Adding if no Telis remote has been paired to the motorized window covering:

1. On the motor, press and hold programming button until the motor jogs twice.
2. On the new remote to be added, press and hold the programming button until the same RTS motor jogs.
3. Confirm remote is controlling RTS shade by pressing the UP or DOWN directional buttons for movement. If no movement, repeat steps 1 & 2.

Continued On Next Page

3

Programming - Setting a favorite position (“my”)

The Telis 1 or 4 remote also enables the user to preset favorite window covering positions. Pressing the button labeled “my” on the remote control performs this task.

Telis 1 RTS remote only:

1. Using the UP (^) or DOWN (v) Buttons, lower or raise the window covering to a desired position. Briefly press the “my” button to stop the window covering.
2. Press and hold the “my” button again until the window covering jogs. The desired position is now preset.

Telis 4 RTS remote only:

1. Select the channel to which the window covering is paired, using the Channel Selector button. (The LED will illuminate each time the Channel Selector button is pressed, indicating the selected channel)
2. Using the UP (^) or DOWN (v) buttons, lower or raise the window covering to a desired position. Briefly press the “my” button to stop the window covering.
3. Press and hold the “my” button again until the window covering jogs. The desired position is now preset.



Note: If the window covering is already in motion, pressing the “my” button twice will divert it to a preset position.

4

Operation

Telis 1 RTS remote only:

1. Press the UP (^) or DOWN (v) buttons to raise or lower window coverings.
2. Use the “my” button to place window covering in a preset position.

Telis 4 RTS remote only:

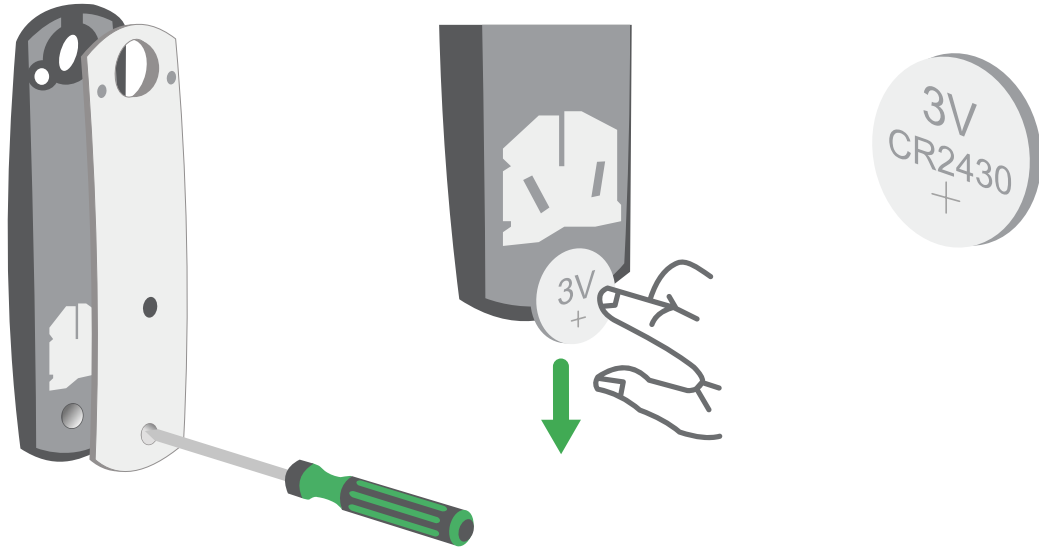
1. Select the channel to which the window covering is paired, using the Channel Selector button. (The LED will illuminate each time the Channel Selector button is pressed, indicating the selected channel)
2. Use the UP (^) or DOWN (v) buttons to open or close the window covering.
3. Use the “my” button to place window covering in preset positions.

5

Battery Installation

Replacing the Battery

1. Using a small screwdriver, loosen the screws on the reverse side of the remote control and remove the back cover.
2. Replace the battery with one 2430 Lithium 3V battery



Note: Visit <https://store.somfysystems.com/> to purchase an additional or replacement product.

This device is FCC certified and complies with part 15 of the FCC rules.
RTS compatibility: RTS transmitters are capable of operating any RTS motor.



BATTERY RECYCLING OR DISPOSAL
Discard batteries and electrical components following local codes or regulations. Recycle batteries and electrical components with designated electronic recycle centers.