

HAND HELD REMOTES FOR XQ5 PREMIUM MOTORS

SMART LINE Remotes

16 Channels with Timer

TECHNICAL DATA

Power Supply	3V Lithium Battery (CR2450)
Battery Life	2 Years
Frequency	434.15 MHz
Remote Range (feet)	65

**PROGRAMMING REMOTES**

Remotes enable the user to control one or more motors, installed on awnings and screens. It is possible to set them up in order to create group commands and let more motors work simultaneously.

The radio signal is shown by the digital display. If the digital display does not appear after button pressure is applied, then the battery has to be replaced.

PLEASE NOTE: Do not use motors with remote controls in areas with risks of radio disturbs over the norm (i.e. airports or radio repeaters). These units may also be disturbed by telecommunication and/or transceiver systems with the same frequency.

PROGRAMMING Remote (FIG 1)

CAUTION: If multiple motors have to be installed, it is important to power on one motor at time during the first programming session, in order to avoid any interferences with the motors.

1. Power on the motor to be paired/programmed.
2. Press and hold **(A) SYNC/PROG-TX** button until the motor starts moving.
3. Check the rotation of the motor, then release **(A) SYNC/PROG-TX** (the motor stops).
4. Within 5 seconds press the corresponding button (i.e. **UP** if the motor rotated up or **DOWN** if vice versa). The remote is now programmed and the rotation of the motor is now synchronized.

ADDING Remote

1. Press and hold **(A) SYNC/PROG-TX** button of a programmed remote until the motor starts moving.
 2. Check the rotation of the motor, then release **SYNC/PROG-TX** (the motor stops).
 3. Within 5 seconds, on the new remote, press the corresponding button (i.e. **UP** if the motor rotates upwards or **DOWN** if vice versa).
- Additional remote is now added.

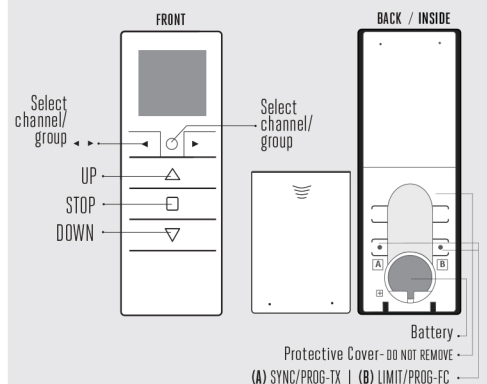
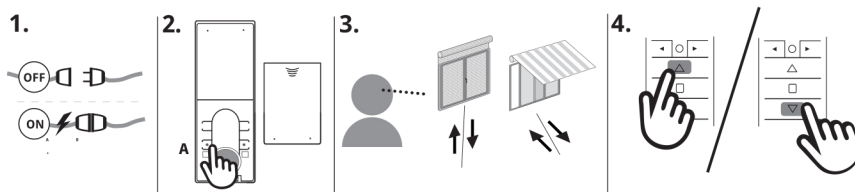
CHECKING/CHANGING DIRECTION

IMPORTANT: change direction must be performed before starting limit setting otherwise limits must be reset.

1. Press **UP** or **DOWN**: The motor will go up or down, otherwise to change direction.

2. Press and hold **(A) SYNC/PROG-TX** button until the motor starts moving.
3. Within 5 seconds press **STOP**: The motor makes a brief jog.

Direction of motor has been reversed.

REMOTE DIAGRAM**FIG 1**

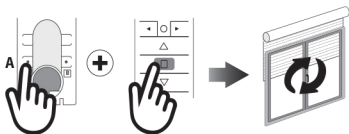
BRIEF JOG	LONG JOG
Change direction of buttons	
Delete a single remote	
	Erase memory
Set limit positions	
End programming mode	
Set intermediate position	

HAND HELD REMOTES FOR XQ5 PREMIUM MOTORS

PROGRAMMING REMOTES CONT.

ERASING Remotes

Push **(A) SYNC/PROG-TX** and **STOP** simultaneously until the motor makes a brief jog in both directions.

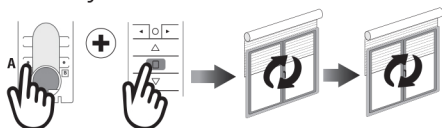


Only the remote used for this procedure has been deleted from motor memory.

RESET MOTOR MEMORY

Option 1

Using a programmed remote, press and hold both **(A) SYNC/PROG-TX** and **STOP** buttons until motor makes first a brief jog, wait for a second long jog to reset motor memory.

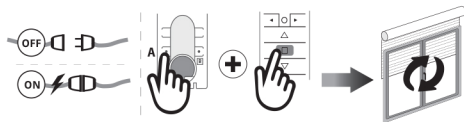


Memory is now empty.

Option 2

Using a new remote (not programmed), power **OFF** motor (unplug), then power back **ON** (plug in).

Within 8 seconds, using remote, press and hold **(A) SYNC/PROG-TX** and **STOP** buttons until the motor makes a long jog.

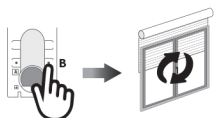


Memory is now empty.

LIMIT SWITCH SETUP

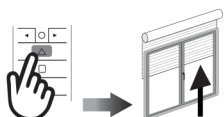
(Motors with electronic limit switch only). ALWAYS SET THE UP LIMIT SWITCH FIRST.

1. Push **(B) LIMIT/PROG-FC** until motor makes a brief jog in both directions.

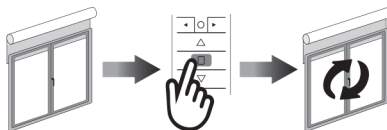


Note: during "programming mode" the operations are in "deadman control"

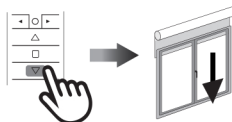
2. Press and hold **UP** button, run motor to desired **UP** limit position.



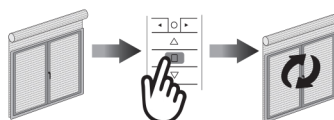
3. Press **STOP** to set **UP** limit position. The motor makes a brief jog.



4. Press and hold **DOWN** button, run motor to desired **DOWN** limit position.



5. Press **STOP** to set **DOWN** limit position. The motor makes a brief jog.



Note: Accurate limit setting can be performed when UPWARD or DOWNWARD by pressing **(B) LIMIT/PROG-FC** a second time: motor then moves slowly in steps towards desired limit. Always press **STOP** button to set the limit position.

AUTOMATIC SETTING OF THE LIMITS

(Motors with electronic limit switch only).

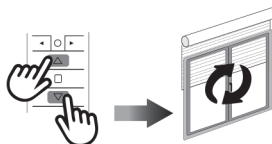
Limits set with torque sensor (mechanical stop of cassette awnings/shades), press and hold **UP** button until the bottom bar hits the cassette or shade box.

A short jog indicates the **UP** position has been memorized. The same procedure can be followed for **DOWN** limit **but only for roller shades**.

INTERMEDIATE POSITION SETUP

(Motors with electronic limit switch only).

Stop the shade/awning in the desired intermediate position, then simultaneously press the **UP** and **DOWN** buttons until the motor makes a brief jog in both directions.



The intermediate position has been set.

SELECTING A CHANNEL/GROUP

When pressing the circle button sequentially, the modes can be switched from single channel control mode to group control mode.

Briefly press the circle button to enter single channel mode. You can scroll through the pre-made groups with the arrow keys. (◀ or ▶)

Note: No groups will appear if groups have not been created previously. See instructions below

CUSTOMIZATION OF THE GROUPS

Briefly press the **CIRCLE** button to enter group control mode.

To create a group press both **ARROW** key (◀ and ▶) simultaneously for 2 seconds. The icon SEL appears and channel 1 starts flashing.

Using the **ARROW** keys (◀ or ▶) scroll to the channel to be set into the group. Press both **ARROW** keys (◀ and ▶) again for 2 seconds to select the channel. Move to other channels and select them in the same fashion.

When all desired channels of the group are set, press **UP**, **STOP** or **DOWN** button to confirm the group. The group is identified by a number from 1-8.

DELETING GROUPS

Enter the group screen by pressing the circle button. Press and hold until the dEL U appears on screen.

Press the **STOP** button to enter the delete groups mode.

Page through the saved groups using the left and right **ARROW** keys. Once the group that needs to be deleted is selected, press the **STOP** button to confirm deletion.

Note: The delete groups mode can be exited at any time by pressing the circle button again.

HIDING CHANNELS

Make sure the channel selection screen is visible, it can be changed by pressing the **CIRCLE** button. Press and hold the **CIRCLE** button until HidE appears on the display.

Press the **STOP** button to enter HidE channels mode. By pressing the left and right **ARROW** keys, the desired hidden channels can be selected. When the desired channels are selected, press the **STOP** button to confirm. The numbers on the screen will blink quickly for confirmation.

Note: Channels can be unhidden using the same process, just deselect the channels.

HAND HELD REMOTES FOR XQ5 PREMIUM MOTORS

PROGRAMMING REMOTES CONT.

REMOTE FACTORY RESET


Factory reset will un-hide any hidden channels and delete all custom groups.

1. Remove the battery cover on the back of your remote and remove the battery.
2. Press and hold the **CIRCLE** button while reinserting the battery. Once the screen comes back on and displays **RESET**, the **CIRCLE** button can be released.
3. After about 3 seconds the remote will start up and all channels will be un-hidden and groups deleted.

TIMER FUNCTIONS

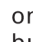
CLOCK SET-UP

(Clock is in 24-hour format)







1. From the channels or group screen, press and hold the circle button until **HiDE** or **dEL**  appears on the screen. Press the **CIRCLE** button again and the timer/clock screen will appear.
2. Press the **STOP** button to enter the menu.
3. Set the hour by using the **UP/DOWN** buttons and press the **STOP** button to confirm. Set the minutes with the same buttons.
4. Select the day of the week by using the **◀ LEFT/ ▶ RIGHT** buttons and press **STOP** to confirm. Clock is now set.
5. **OFF** now appears on screen. By using the arrow buttons (**◀** and **▶**) you can scroll between **OFF** and **On** to choose between having the clock displayed or not in stand-by mode.

Note: During operation, the clock is shown only in Automatic Mode or Random Mode.

CREATING OR EDITING A SCHEDULE

1. After setting the clock, from either the channels or groups screen, press and hold the **CIRCLE** button until **HiDE** or **dEL**  appears on the screen. Press the **CIRCLE** button again two times until **ProU** screen is reached. Press **STOP** to enter the menu.

2. The 6 schedules can now be chosen:

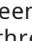
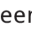
     

3. Use the **◀ LEFT/ ▶ RIGHT** buttons to select the schedule to be created or edited. Once the schedule is selected, press the **STOP** button to confirm.
4. Use the **◀ LEFT/ ▶ RIGHT** buttons to select the day of the week:
Su Mo Tu We Th Fr Sa
5. Press the **UP/DOWN** buttons to select or deselect one or multiple days of the week. Once the day(s) of the week have been selected, press **STOP** button to confirm.


Note: When the day of the week is blinking slow, the day is not selected, and when the day of the week is blinking fast, the day has been selected.

6. Use the **UP/DOWN** buttons to select the hour. Press **STOP** to confirm. Set the minutes with the same buttons.
 7. Choose the command to be sent. Use the **UP/DOWN** buttons to select between the **UP** command, **DOWN** command and Intermediate Position command. Press **STOP** to confirm.
 8. Choose the channels to add to the schedule. Use the **◀ LEFT/ ▶ RIGHT** buttons to move between channels and the **UP/DOWN** buttons to select or deselect the channel. Press the **STOP** button to create the schedule.
- Note:** When the channel is blinking slow, the channel is not selected and when the channel is blinking fast, the channel has now been selected.

SCHEDULE DELETION

From the channels or groups screen, press and hold the **CIRCLE** button until **HiDE** or **dEL**  appears on the screen. Press the **CIRCLE** button again three times until **dEL**  appears on screen. Press the **STOP** button to enter the menu. Select the schedule to be deleted and press **STOP** button to confirm. The schedule is now deleted.

UNDERSTANDING AND CHANGING THE OPERATIONAL MODE

The remote operational mode can be changed between Automatic More (**AUT**), Random Mode () and Manual Mode (**no icon**).

The operational mode can be changed by quickly pressing the **◀ LEFT/ ▶ RIGHT** buttons simultaneously.

With each press of the button, the transmitter will change from manual to automatic, to random, to manual, etc. In automatic mode and random mode, the clock will appear on the screen instead of the channel or group lettering.

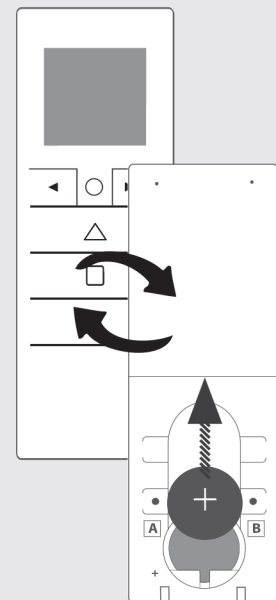
Manual Mode: The transmitter works only by sending up stop and down commands to channels or groups by manually pressing the button on the transmitter.

Automatic Mode: The transmitter will operate with manual control as well as executing schedules automatically.

Random Mode: The transmitter will operate with manual control and all scheduled will execute with a delay from 0-30 minutes. For example, if the schedule is set to go off at 8:00, when in random mode, the schedule will go off anywhere between 8:00 and 8:30.

BATTERY SUBSTITUTION

Slide off the lower back cover and remove old battery.



Insert the new battery respecting the correct polarity.

IMPORTANT: Batteries contain polluting substances. After removing, throw them in the designated batteries collection points.