

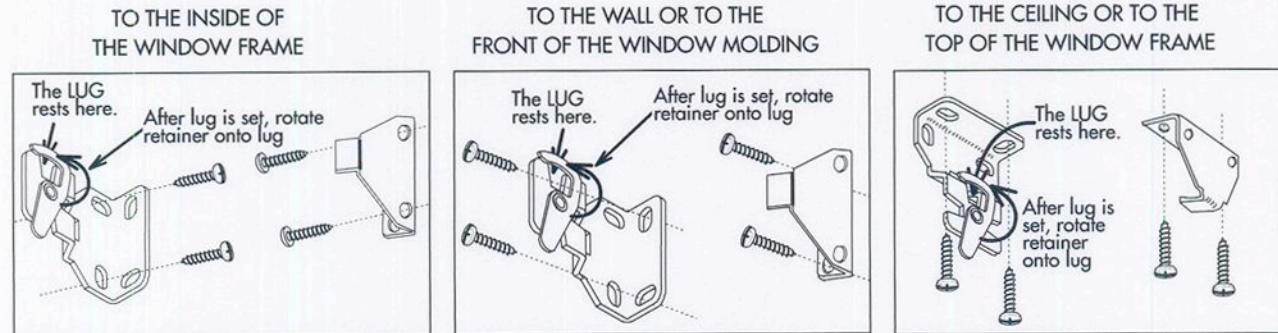
Chain Drive Instructions

SUPER CLUTCH

1. MOUNT THE BRACKETS.

If the clutch is on the right end of the shade, attach the brackets to the window frame, window molding, wall or ceiling, as shown below.

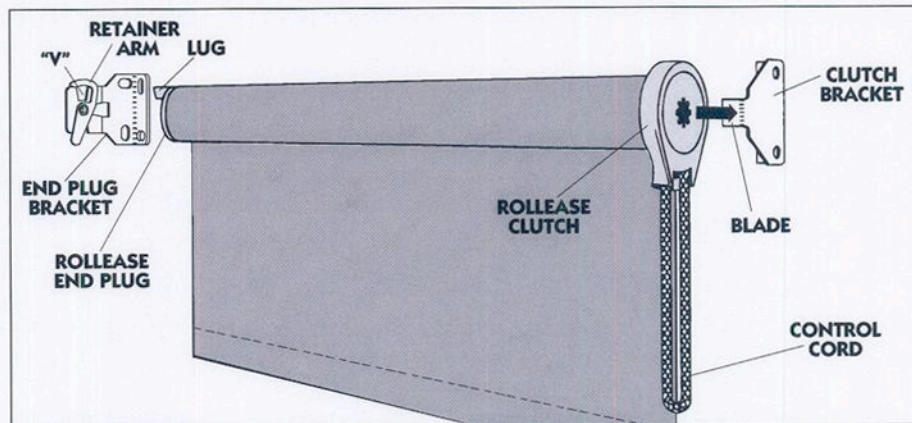
If the clutch is on the left end of the shade, reverse the bracket positions, left for right.



2. Install the Shade.

A. Push the **Clutch** straight onto the bracket **Blade** until fully seated. *The bottom of the Clutch faces down.*

B. Lower the **LUG** of the End Plug onto the "V" of its bracket. The roller should fit in the bracket securely, just a little play. **Rotate the Retainer to lock the Lug.**

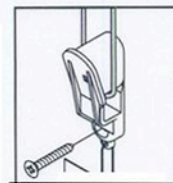


3 Install the Tension Device.

Tension Device –for safety-reduce the hazard of strangulation and entanglement of children & pets by limiting access to the control Chain. Decorative keeps the chain close to the wall.



1. Lower the shade.
2. Position the Tension Device on the frame or wall so it does not interfere with the operation of the shade. **It must be installed loose so it does not prevent the chain Joiner from passing through.**
3. Insert the sharp screw through hole and secure firmly as pictured.
4. Operate shade and confirm the chain flows smoothly.



4. Ball Chain Lifts and Lowers the shade.

GENTLY pull the Chain: For shades where the fabric rolls against the window the **front** Chain lifts.

If the shade rolls away from the window the **back** Chain lifts.

5. Because of this Clutch design Stops can not be used.

Operate the shade slowly and look at the position of the shade bottom

Rolling the shade up-leave at least 8 inches of material showing so the bottom does not flip over the top.

When lowering to not exceed the bottom length. Although the material is well secured to the roller there must be a minimum of two wraps on the roller.