

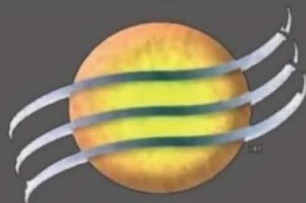
motorized

CITADEL

High Wind Zipper Track



INSTALLATION INSTRUCTIONS



NORTH SOLAR SCREEN
RULE THE SUN™

TOOLS NEEDED

INSTALLATION

TOOLS FOR ASSEMBLY

- Drill
- $\frac{3}{8}$ " Metal Drill Bit
- $\frac{1}{4}$ " Masonry Drill Bit
- Measuring Tape
- Pencil
- 4' - 6' Level
- Phillips #2 Driver
- Manual Screwdriver (Phillips)
- Driver for mounting fasteners
- T15 screwdriver or bit
- Miter saw with metal cutting blade
- Rubber Mallet • Lithium Grease

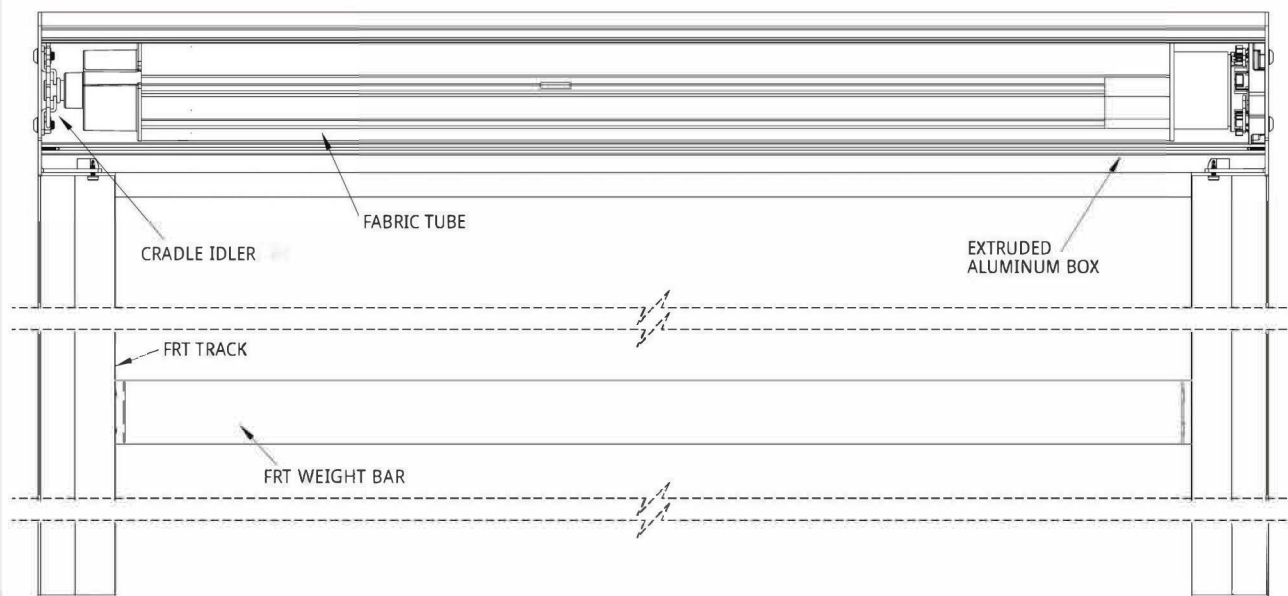
HARDWARE PROVIDED (PER SHADE)

- End Caps (2)
- Top Back of Box Piece
- Box Hood
- FRT Tracks (2)
- Remote (1)
- Motor Clip (1)
- "L" Channel Brackets for inside mount (2) if ordered
- Cradle Idler

NOTE: Hardware needed

- $\frac{5}{16}$ " X 4 $\frac{1}{2}$ " Torx Screws or Appropriate (4 per shade)
- $\frac{3}{8}$ " Flat Washers or Appropriate (4 per shade)
- 2 $\frac{1}{2}$ " Wood screws (6-8) or Appropriate
- $\frac{3}{4}$ " Sheet metal screws (6-8)
(For optional "L" channel mounting bracket)

COMPONENTS

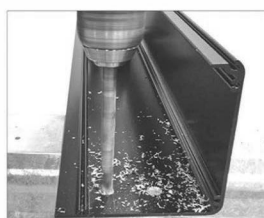


STEP 1

SHADE COMPONENTS

PREPARE BACK OF BOX

- Mounting holes on box should be evenly spaced and marked at 2" from each end.
- Drill 2 mounting holes using a $\frac{3}{8}$ " * metal drill. Repeat on opposite side.



Before you begin Remove parts from packaging

- ! If your installation requires "L" channel, refer to "**L Channel Installation**" on page "6" before preparing back of box.
- ! These instructions represent a surface mount installation.
- * Surface mount holes are drilled on the back of the top-back box piece and undermount holes are drilled on the top of the top-back box piece.
- ! Before starting, ensure that neither part of the housing is bent and that they fit together by assembling just the front and back on the floor.

DRILL HOLE FOR POWER CORD

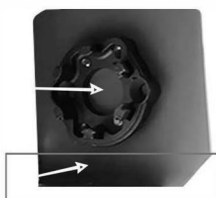
- On motor side drill a hole for power cord. Be sure wire will not interfere with operation of shade. Wire hole **MUST** be sealed with caulk to prevent water damage. Don't forget to form a drip loop with the power cable. See possible options below

Face Mount



Top corner of box

Face Mount or Under Mount



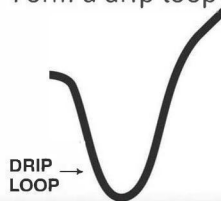
Bottom section or middle of end cap

Under mount



Back lower corner of box

Form a drip loop

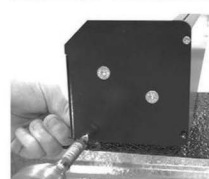
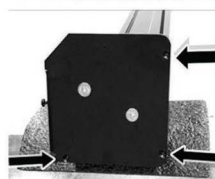
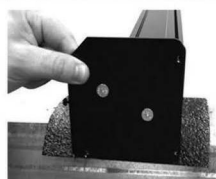


Either outside box or inside box

ATTACH END CAPS

- Use screws installed in the top back box piece to install end caps on top back box piece.
- Remove the screws with T15 screw driver or bit
- Align end cap up to screw holes and secure end cap with the screws you just removed

Repeat the process on the idler end



STEP 2

SHADE COMPONENTS CONT.

NOTE:

! 2 person job

HANG BACK OF BOX

- Hold top back box piece to surface, drill holes and secure lag screw with washer in top hole.
- Level top back box piece.
- Once top back box piece is secure, bolt 2 bottom lags and washers on each side.



- Remove and set aside hood screws under end caps on both sides.



! INFORMATION

Be sure mounting bolts will not interfere with fabric operation.

STEP 3

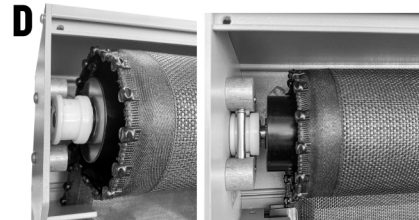
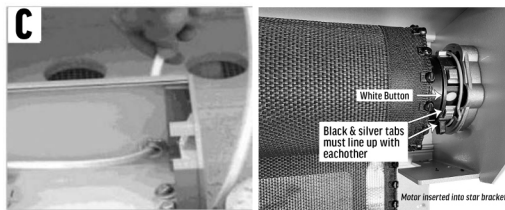
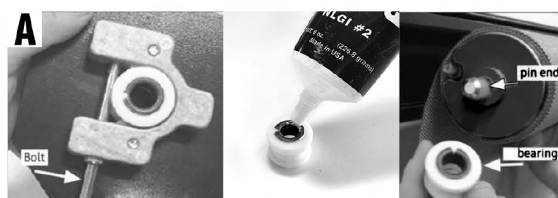
SETTING UP THE ROLLER

INSTALL FABRIC TUBE

- Remove bolt from cradle idler. Add lithium grease to bearing. Place white bearing in non-motor side pin end.
- Remove motor clip from star bracket on the motor end cap, set aside.
- Pull motor wire through hole & insert fabric tube, motor side first, into endcaps. Make sure white button is visible (For XQ5 Motor only). Make sure the black motor tabs and silver tabs bracket tabs are in line with each other.
- Place idler bearing into cradle & replace bolt to lock in place.

NOTE:

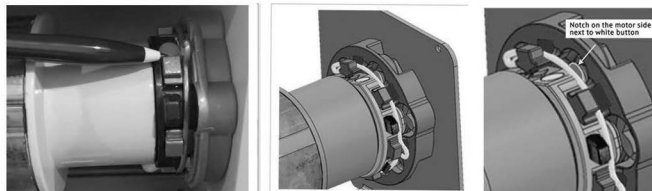
! 2 person job



SHADE COMPONENTS CONT.

INSERT THE SPRING CLIP

- e. After fabric tube is installed, replace motor clip over star bracket. *Motor clip must be correctly seated to prevent shade dropping from bracket and damaging motor*



Make sure the roller is locked into the star bracket with the clip before going any further. Gently pull side to side to make sure roller doesn't come out of the bracket.

If the roller comes out of the star bracket the spring clip is not installed correctly.

Tips: Make sure the motor is all the way into the star bracket. The black notches from the motor side should be in line with the silver notches on the brackets.

Locate the black notch on the motor head located across from the white button. (see last picture with arrow above) Make sure the spring clip is seated right in front of it so the motor is locked into place with the clip.

STEP 3

WIRE 3 PRONG ELECTRICAL PLUG

TOOLS NEEDED

- Phillips screwdriver
- Utility knife
- Wire strippers

WIRING THE PLUG

- a. Once you disassemble your end plug, slip in the cover on the wire.
- b. Insert the wires into the correct metal plates:
White wire goes to the **SILVER** screw
Black wire goes to the **BRASS** screw
Green wire goes to the **GREEN** screw
- c. Once your wires are secure, slip the cover over the wire. Make sure there is no wires exposed. Tighten the 2 screws to secure the weatherseal in place.
- d. Reassemble the front plug housing and secure the screws.

! INFORMATION

Caulk any holes you drilled for the power cord and make a drip loop to protect the motor from water damage.

Make sure just the wires go in between the metal plates and there is no plastic in the way.



STEP 4

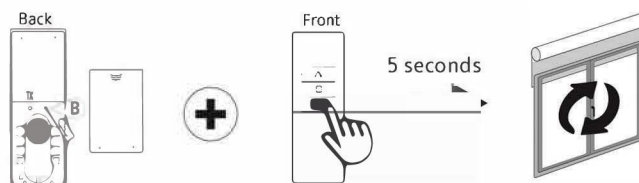
SETTING LIMIT STOPS & CHECKING FABRIC LEVEL

! INFORMATION

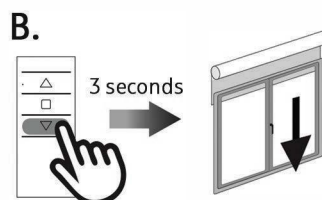
Make sure your motor is plugged in before this step and that there is power getting to the motor from your outlet.
You can always re-adjust your limit stops at a later time.

OPEN THE LOWER LIMIT

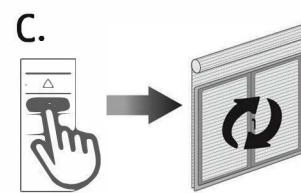
- a. Take the back cover off remote. Using a paperclip, press the "B" programming button and hold the DOWN arrow on the remote simultaneously. Hold for 5 seconds until shade jogs.



- b. Hold the DOWN arrow on remote for 3 seconds then release. The shade will continue traveling on its own.



- c. Once you reach your lower limit, press the STOP button on the remote.



CHECK THAT FABRIC IS CENTERED

Check to see if zippers are centered. The zippers should be the same distance from the end caps at each end.



IF ZIPPERS LOOK CENTERED: Press STOP on the remote until shade jogs. Bottom limit is set. Continue to 'Setting the Upper Limit Stop'

IF ZIPPERS ARE NOT CENTERED: Roll the shade all the way down to EXPOSE THE ROLLER. See 'Centering the Fabric' video for more information. **Make sure your bottom hem bar is protected before you roll the shade past your ordered height.** Inch the shade down by pressing the DOWN arrow on the remote until the fabric tube is exposed.

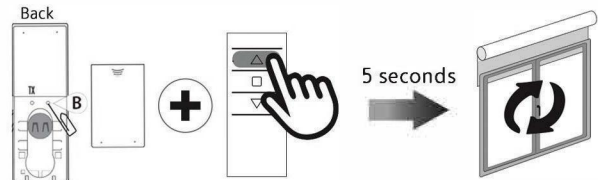
Once the fabric is centered, use the UP arrow to go back to your correct lower limit. Press STOP on the remote until shade jogs. Bottom limit is set.

LIMIT SETTINGS CONT.

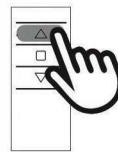
SETTING THE UPPER LIMIT

(XQ5 MOTOR ONLY See last page for Somfy Motors)

- a. Using a paper clip, simultaneously press the right programming button on the back of the remote and the UP arrow on the front of the remote. Hold both buttons up to 5 seconds until shade jogs.

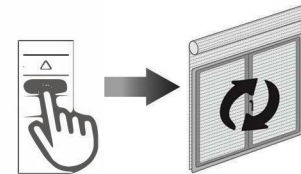


- b. Once it jogs, Inch the shade up using the UP arrow, **do not hold it for more than 1 second**. You don't want the shade to hit the box.



- c. Be sure to leave between ½" and 1" of space between your bottom hem bar and your box so that they don't bump

- d. Once you reach your upper limit, press the STOP button on the remote until shade jogs. Upper limit is now set.



STEP 5

SIDE TRACK INSTALLATION

MEASURING / CUTTING THE SIDE TRACKS

- a. To determine track cut length, measure from the bottom of the box to the desired drop.
- b. Side tracks must be cut from the bottom end. You will need to remove bottom cap before cutting track.
- c. Verify you allowed for thickness of bottom cap in your deductions.
- d. Cut side track to desired height with insert and track cover in place.

! INFORMATION

Before cutting track, identify right and left track.

Side tracks and "L" channels are shipped over length and require to be cut down during installation.



- e. From the full length of the cut side track, remove snap-in track cover.
- f. Mark the left piece L and right piece R. These will be reinstalled later.
- g. Remove burrs from the bottom of the cut side track and install the bottom end cap.

STEP 6

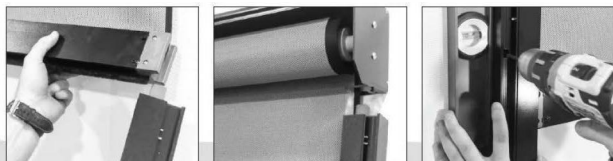
SIDE TRACK INSTALLATION

INSTALL FABRIC INTO SIDE TRACK

Before you begin

- ⓘ Lower screen until the weight bar hangs at least 5" from the bottom most portion of the box.

- Insert fabric into side track and align outside of track with outside of box. Attach with top fastener only.
- Repeat with opposite track.
- Check that tracks are leveled and install bottom fastener to secure track



- Add additional fasteners as needed, checking continually to make sure no binding has occurred.

Install fasteners in additional pre-drilled holes.

NOTE:

- ⓘ After installing bottom fastener, if binding occurs while fabric is going down, loosen bottom fastener and allow fabric to correct itself.



- Install the track cover working from top to bottom (making sure you have the correct cover for each side track).

STEP 7

SHADE COMPONENTS CONT

INSTALL BOX HOOD

- Set the box hood into groove on the top of the top back piece of the box and hinge to set into place.
- Use the 2 hood screws removed from the end caps on the top back box piece to secure box hood.



ENJOY THE SHADE

OPTIONAL "L" CHANNEL

"L" CHANNEL INSTALLATION

! INFORMATION

Do NOT attach side tracks to structure at this time. "L" Channels are shipped over length and require to be cut down during installation.

INSTALL "L" CHANNEL

a. Cut the L channels to the full length of the opening

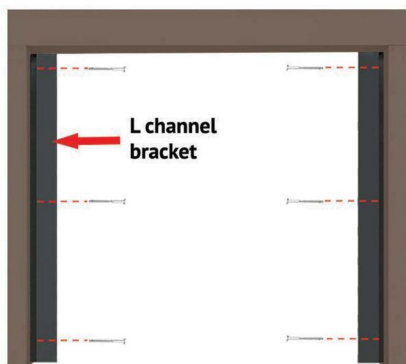
b. pre-drill holes in the narrower side of the "L" channel before installing



c. Install the top mounting fastener, level "L" channel and install the bottom fasteners



Add approx 1 fastener every 2 feet or as necessary. (If stucco add additional fasteners).



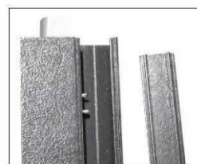
The housing box will sit in front of the "L" Channel bracket

Proceed to Prepare Back of Box.
(Page 3)

INSTALL FABRIC INTO SIDE TRACK WITH "L" CHANNEL

Before you begin

! Remove track covers and set aside



a. Insert fabric into side track and align outside of track with outside of housing box

Attach with top fastener only



b. Repeat with opposite track.

c. Check that the tracks are leveled.



d. Fasten screws from the back side of "L" channel into sidetracks.

cover the screw heads with touch up paint provided



e. Install the track cover working from top to bottom.

Make sure you have the correct cover for each side



NOTE:




! After installing bottom fastener, if binding occurs while fabric is going down, loosen bottom fastener and allow fabric to correct itself.

MOTORIZED OPTION




ADJUSTING MOTOR LIMITS

SOMFY LIMIT SETTINGS

SETTING TOP LIMIT

- Send motor to its current upper limit.
- Press both  and  buttons at the same time until motor jogs.
- Adjust to new upper limit position.
- Press  button until the motor jogs.

SETTING LOWER LIMIT

- Send motor to its current lower limit.
- Press both  and  buttons at the same time until motor jogs.
- Adjust to new lower limit position.
- Press  button until the motor jogs.

ENJOY THE SHADE

