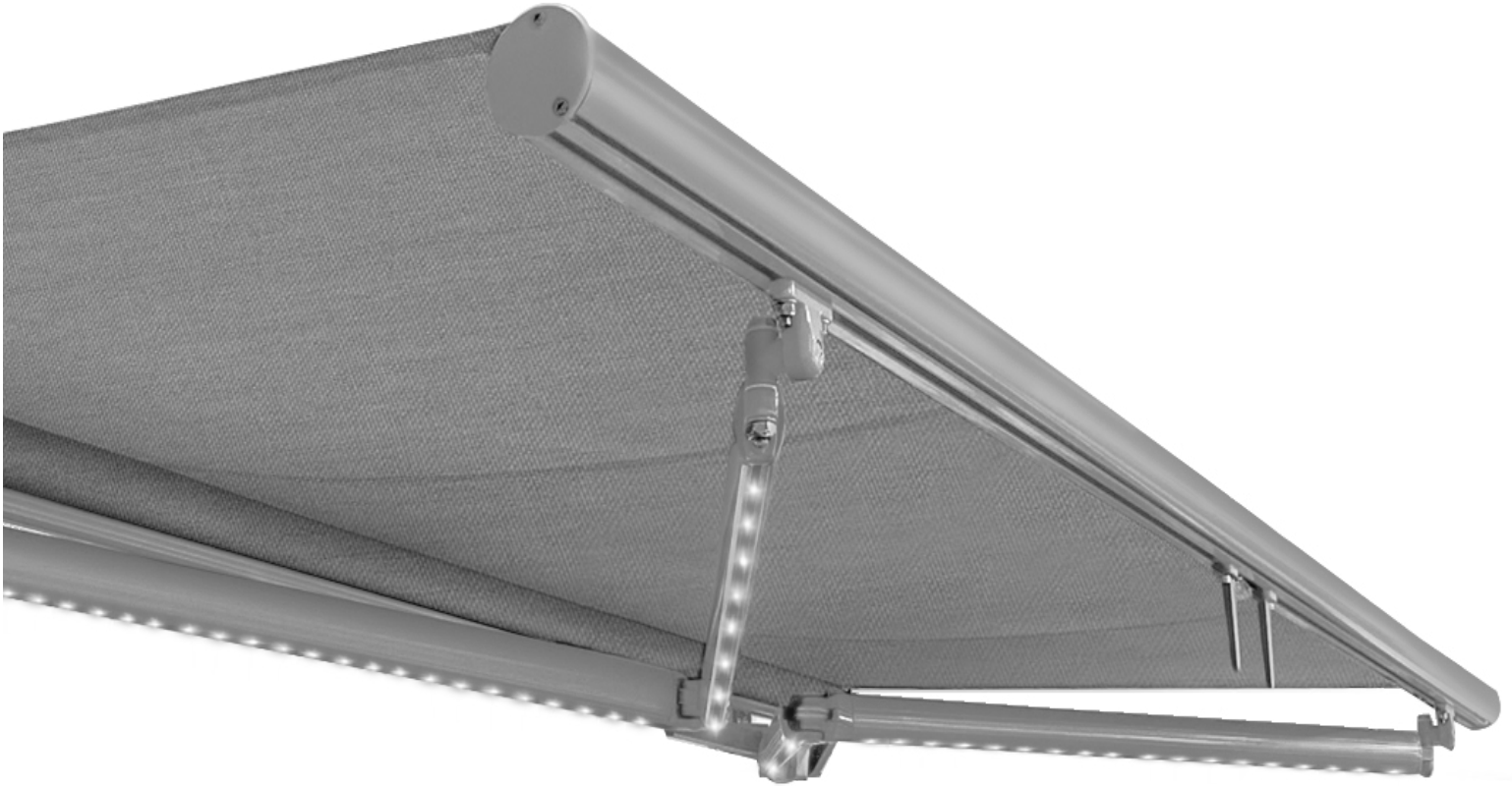
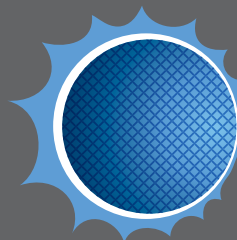


motorized

CATALINA AWNING



CATALINA AWNING INSTALLATION MANUAL



SUN CONTROL
RETRACTABLE SHADES
America's Shade Experts

INTRODUCTION

CATALINA AWNING INSTALLATION

This manual was prepared by the Manufacturer to provide the necessary information to those authorized to install and perform special maintenance on the product. It is prohibited to remove, rewrite or in any way modify the pages of the manual and their content.

It is highly recommended to never attempt to repair or adjust unit(s) without consulting an awning specialist or Sun Control Retractable Shades.

This manual must be kept complete in all its parts in an easily accessible place.

The manufacturer reserves the right to update products and corresponding manuals without the obligation to update previous manuals.

The manufacturer reserves all rights on this manual. It may not be reproduced in any way or in part, without the manufacturer's written authorization.

SYMBOLS USED IN THIS MANUAL

The CAUTION symbols used in this manual are given below.



INFORMATION AND PRECAUTIONS

Useful advice and instructions to be observed to ensure proper installation and/or maintenance of the Catalina. Failure to observe may compromise the integrity and/or the resistance of the product.



CAUTION

DANGER TO OPERATOR! Instructions to be evaluated and followed carefully. Failure to comply may compromise individual safety.

TOOLS FOR ASSEMBLY

- Drill
- String Line
- Level
- Complete Set of Tools
- Appropriate fasteners for bracket installation
- Equipment for working at height which are compliant with current standards of individual safety in the workplace.
 - ladders
 - scaffolding
 - aerial platforms
 - etc.



CAUTION

All screws used on the aluminum components must be closed to a maximum tightening torque of 20Nm (=2Kgm). If a tightening torque greater than this is used, the castings and stainless-steel screws will be damaged. We therefore recommend using torque wrenches and drivers.



CAUTION

Use low-torque drivers: applying high torque to stainless-steel hardware can cause the threads to seize, particularly for stainless or stainless-aluminum screws and threads.

SAFETY

CATALINA AWNING INSTALLATION

GENERAL SAFETY INFORMATION

- During all work described in this manual, ensure that **ONLY** authorized technicians are present in the work zone.
- Do not place objects on the awning fabric deck.
- **IT IS PROHIBITED** for anyone to hang on or support themselves from the awning – this would create a serious risk of injury as well as potentially damage the awning itself.
- Wear personal protective equipment and any other safety clothing required by current standards on safety in the workplace.

CAUTION

It is recommended that installation, adjustment, and special maintenance of the awning be carried out only after consulting an awning specialist or Sun Control Retractable Shades.

CAUTION

A minimum clearance of at least 20 INCHES between the awning front bar and any fixed obstacle (wall, terrace, etc.) must be provided.

CAUTION

It is prohibited to install or place ladders or other objects near the awning, as this would reduce the space required for installation.

REQUIREMENTS FOR WORKING IN SAFETY

- Check that any temporary structures (scaffolding, ladders etc.) and all personal protective equipment (safety slings and harnesses etc.) meet code and are in good condition before use.
- Always use adequate PPE.
- If there is more than one technician, the work must be coordinated.
- The technicians must follow the safety instructions they have received.
- If the awning is to be installed above the ground-floor level of a structure, the area must be cordoned off while the awning is being lifted to ensure nobody is beneath the suspended load.
- Do not remove restraining straps on arms until installation is complete. Lateral arms are under high tension and could cause injury if straps are removed prematurely.

WORKING ENVIRONMENT

Installation and special maintenance must be performed in an environment sufficiently lit by natural or artificial light.

The technician must have good visibility of the work to perform and must also prevent any unauthorized persons from approaching the awning work zone.

INFORMATION

Some instructions given in this manual are of a general nature, and must therefore be adapted to the model of awning you are assembling.

SAFETY

CATALINA AWNING INSTALLATION

GENERAL AWNING SAFETY INFORMATION

CAUTION

Motorized awning must not be installed in potentially explosive (ATEX) atmospheres.

CAUTION

Never extend the awning more than the tension in the arms as there is a risk that the awning will return under the tube and be ruined.

CAUTION

The awning is recommended to be installed at a minimum height of 100 INCHES for best operation.

AUTOMATIC CONTROL DEVICES

VIBRATION SENSOR

All Catalina Awnings come equipped with a vibration sensor.*

*Vibration sensors may not fully protect awning from wind damage. Always make sure to monitor wind conditions during operation.

ELECTRICAL CONNECTIONS AND INSTALLATION

CAUTION

Electrical connections should be made by qualified and authorized persons with the power supply shut off.


INFORMATION AND PRECAUTIONS

It is not permissible to connect two or more motors to the same switch, as there is a risk of induced currents which could damage the motors.

PRE-ASSEMBLED CATALINA AWNING



NOTE:

 Catalina is shipped pre-assembled.

TECHNICAL TABLES

CATALINA AWNING

CAUTION

THE FOLLOWING TABLE IS PURELY INDICATIVE. TO THE BEST OF OUR KNOWLEDGE THE INFORMATION IS UP TO DATE SW SUN CONTROL DOES NOT PROVIDE ANY GUARANTEE REGARDING ACCURACY, RELIABILITY, AND COMPLETENESS OF THE INFORMATION CONTAINED HEREIN. INDEED, IT IS THE USER'S RESPONSIBILITY TO ENSURE THE SUITABILITY AND ACCURACY OF THIS INFORMATION.

INFORMATION AND PRECAUTIONS

Determine the center point of the overall width of the square bar for proper component placement. Component placement goes from square bar edge to center and is identical on both sides of awning.

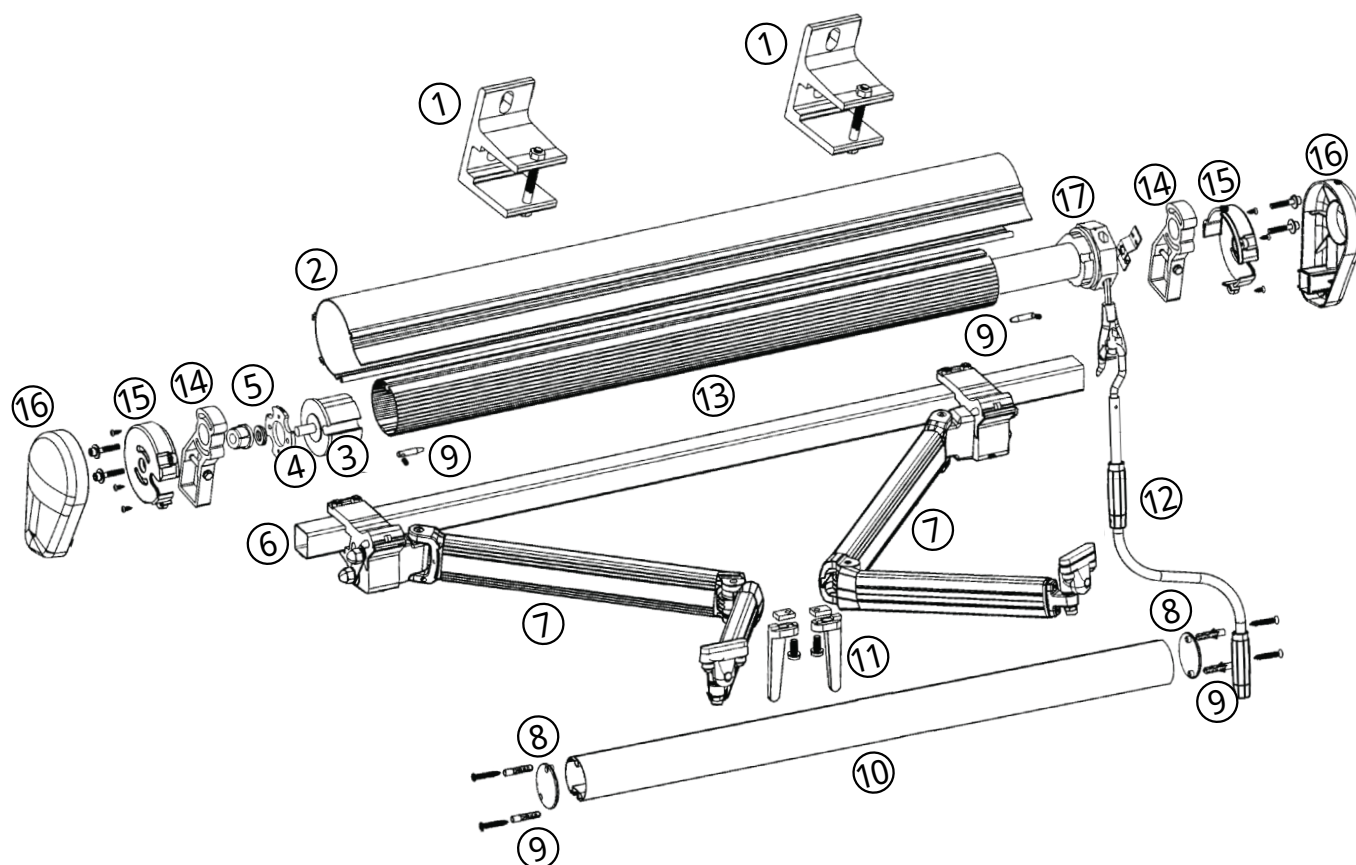
TABLE OF COMPONENTS NEEDED

PROJECTION	COMPONENTS	CATALINA AWNINGS 10' - 20' WIDE
8'	Arms	2
	Wall Mount Brackets	4
	SWSC 50Nm CMO Motor	1
10'	Arms	2
	Wall Mount Brackets	4
	SWSC 50Nm CMO Motor	1
12'	Arms	2
	Wall Mount Brackets	4
	SWSC 50Nm CMO Motor	1

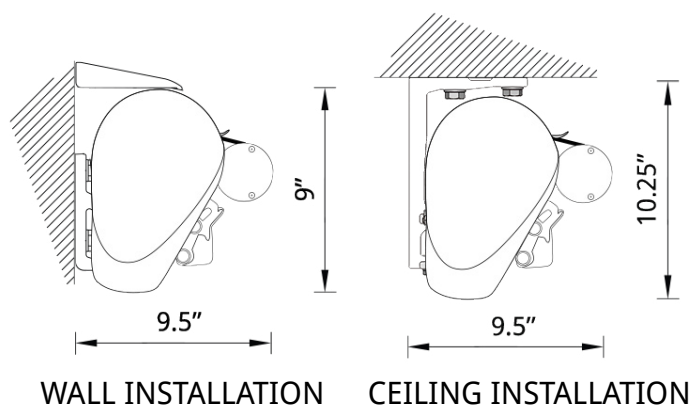
COMPONENTS

CATALINA AWNING

EXPLODED VIEW



- | | |
|-----------------------|--------------------------|
| 1. Wall Bracket | 13. Fabric Tube |
| 2. Fabric Cassette | 14. I-Style Tube Bracket |
| 3. Round Pin | 15. Cassette Lock Cap |
| 4. Side Lock Cap | 16. Cassette Cap |
| 5. Idler Bushing | 17. Motor |
| 6. Square Bar | |
| 7. Lighted Awning Arm | |
| 8. Front Bar Cap | |
| 9. Fabric Lock | |
| 10. Front Bar | |
| 11. Front Bar Guide | |
| 12. Hand Brace | |

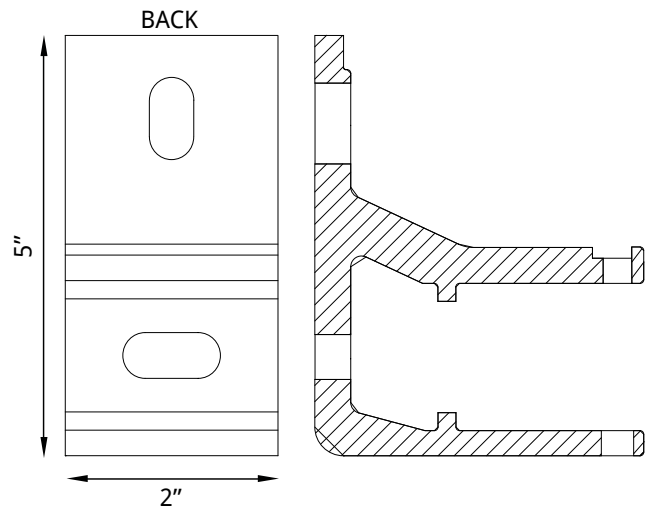
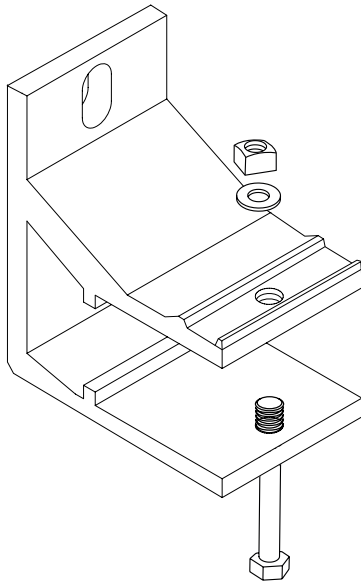


SUPPORT BRACKETS

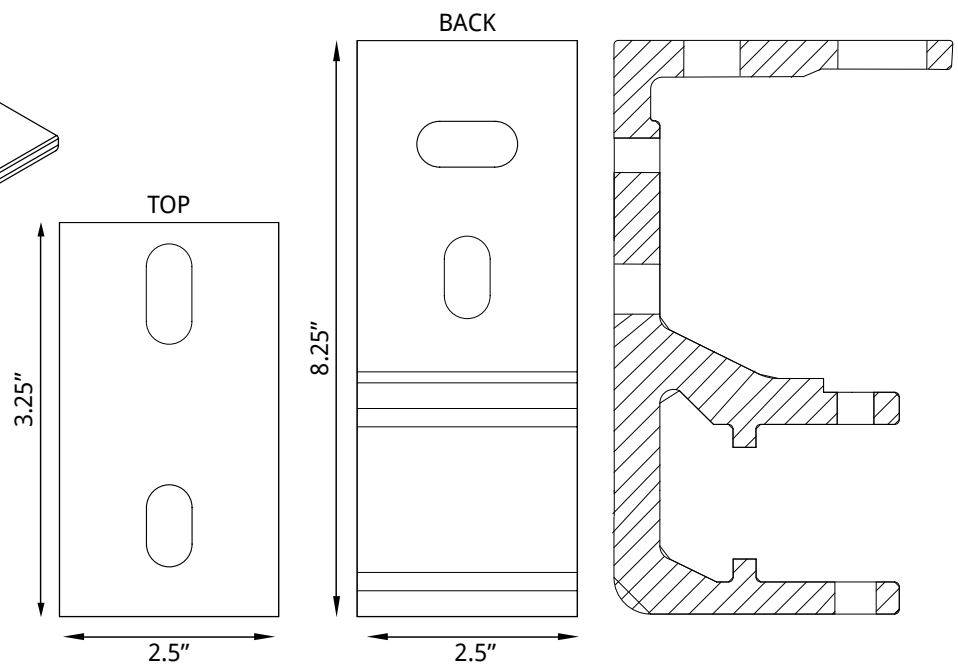
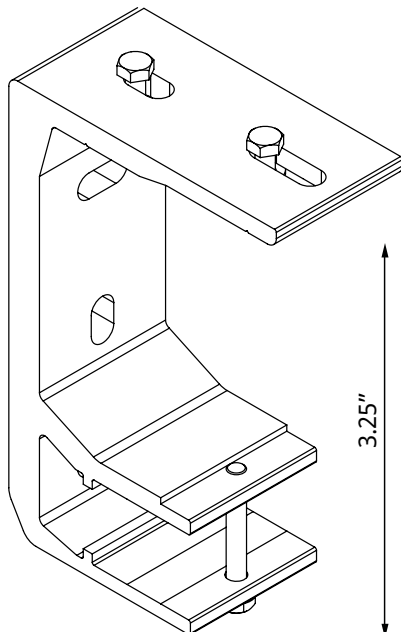
CATALINA AWNING

MOUNTING BRACKETS

WALL BRACKET



CEILING BRACKET



STEP 1

CATALINA AWNING

BEFORE YOU BEGIN, NOTE:

- Catalina size
- Support bracket dimensions
- Number of support brackets
- Operation side of the Catalina

IMPORTANT



Insure support brackets are always mounted into an adequate structure.

- Dimensions of the wall/ceiling where the awning is to be installed

NOTE:

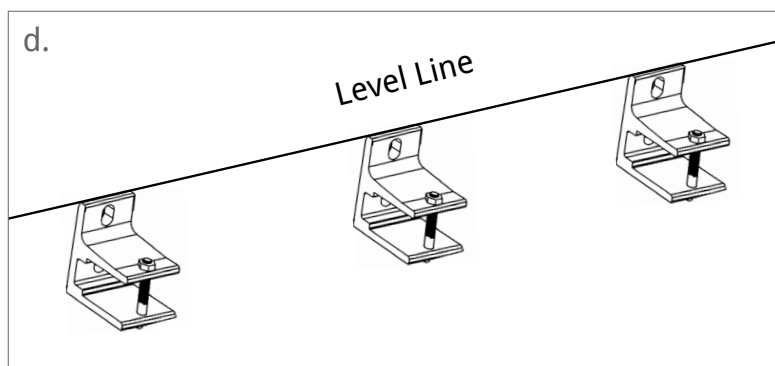
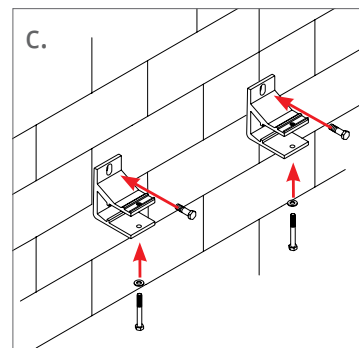
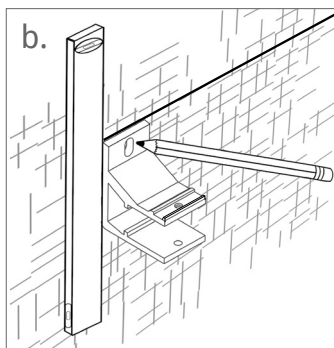
! 2 person job

INSTALL BRACKETS

- a. Mark out placement of brackets on mounting surface.

Ideal placement of mounting brackets is no further than 12" away from awning shoulders on each side. This may vary slightly based on stud placement.

- b. Using a string line & level, mark where the support brackets & holes need to be made on the mounting surface.
- c. Mount each bracket to surface using appropriate hardware.
- d. Confirm brackets are level.



STEP 2

CATALINA AWNING

MOUNTING AWNING IN BRACKETS

- a. With assistance, lift the awning to the wall brackets and slip the square bar into brackets.

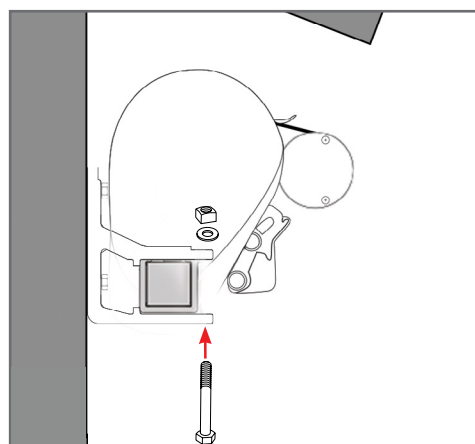
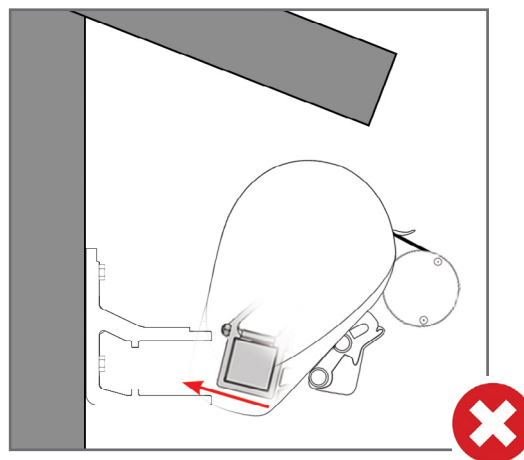
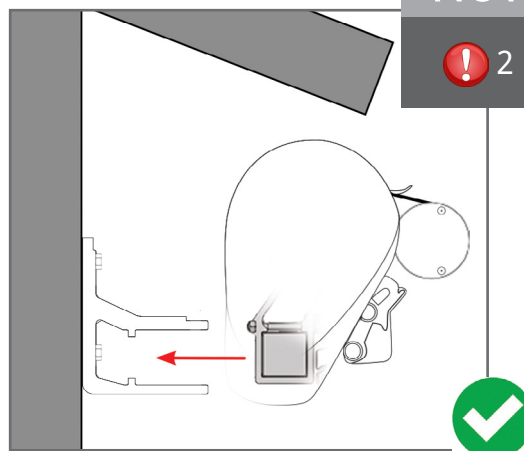
If the square bar has difficulty sliding into the brackets, first line up the square bar with the opening of the support brackets. Then slowly lift or lower the front bar until the square bar completely slides into the brackets. This may require the brackets to be loosened slightly.

Once the square bar is secure, re-tighten mounting fasteners.

- b. Make sure the awning is centered and install the retaining bolts into the brackets. Then secure the retaining bolts with nut.
- c. Connect awning motor to power source.
- d. You may now remove all restraining straps. While removing the restraining straps from the awning, be careful not to damage the fabric.

NOTE:

! 2 person job



IMPORTANT

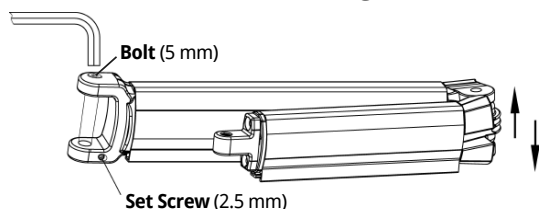
! Verify all bolts are re-tightened when adjustments are complete.

STEP 3

CATALINA AWNING

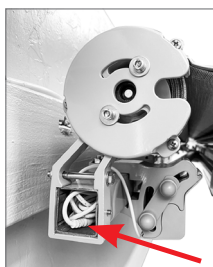
LEVEL ARMS

- Arms may need to be adjusted so that they are level with each other when fully retracted. To be able to adjust arm angle, loosen set screw first with 2.5 mm allen wrench.
- Loosen or tighten bolt with 5 mm allen wrench, depending if you need to raise or lower awning arm (**tighten bolt** = raise arm, **loosen bolt** = lower arm)
- Once arms are level with each other, use allen wrench to re-tighten set screw.



LED LIGHTS

- If built in LED lights on awning arms are not turning on, remove end cap to reveal wire connection.
- Verify connection is secure on both ends. If you still have issue, please call Technical Support at **877.792.0030**



FINISHING ADJUSTMENTS

PITCH ADJUSTMENT

- Remove bolt covers
- Using a 17mm wrench, loosen nuts located on side of shoulder.
- Using a 13mm wrench, loosen nut located on bottom of shoulder to lower and tighten nut to raise.
- Re-tighten nuts on side of shoulder and replace all bolt covers. Repeat steps on opposite shoulder if needed.



 **Verify awning is level before retracting.**

OPERATE SHADE

- Extend and retract Catalina Awning a few times by pressing the up and down arrows on the provided remote to be sure there are no further adjustments are needed.

ENJOY THE AWNING

TROUBLESHOOTING

CATALINA AWNING

PROBLEMS	CAUSES	SOLUTIONS
The fabric does not roll up straight	Incorrect symmetry of arms Uneven fabric	Please call Technical Support 877.792.0030 Use a fabric shim
The awning does not fully close The awning does not fully open	Incorrect adjustment of limit switch.	See manual for motor
The motor is very noisy	Incorrect wiring Motor failed	Please call Technical Support 877.792.0030
The motor shuts down after 4-5 min of continuous operation	Thermal protection switch is activated	Let motor cool off for a 30-40 minutes
The awning does not move	Power loss Incorrect wiring	Check Breaker and GFI Outlet See manual for motor
The awning does not roll up in high winds.	Power loss to awning or vibration sensor Vibration sensor needs adjustment Faulty vibration sensor	See vibration sensor instructions
The awning opens or closes by itself.	Vibration sensor battery dead	Replace battery in vibration sensor
Noisy during operation	Loose bolt or attachment	Tighten all bolts or attachments

Technical Support is available Mon - Fri, 8a - 5p MST

877.792.0030

Email us: technicalsupport@swsuncontrol.com